



Magi-Cut V12 *Express*

Guide

Revision 1.00

Contents

1. Working with Magi-Cut V12 Express	2
2. Setup (install)	17
3. Parameters	28
4. More about Cutting lists	32
5. More about Review runs	38
6. File Management	53
7. Backup and Restore	55
8. Access to Help	57

© Copyright 2023 Magi-Cut Software Ltd. All rights reserved.

No part of this document may be reproduced or transmitted in any form or by any means, electronic or mechanical, for any purpose, without the express written permission of Magi-Cut Software Ltd.

This Manual and the Software referred to are licensed to the Company or Person identified by the Licence and shown on the Startup screen. Please make sure that you have read and understood the Software Licence Agreement provided before you install and use the software.

1. Working with Magi-Cut V12 Express



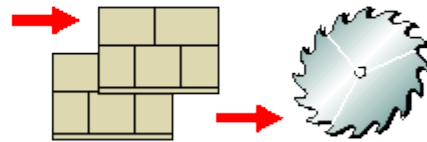
The Magi-Cut V12 Express program is a simple and straightforward way of generating cutting patterns for a cutting list. It is designed for the smaller workshop using a sliding table saw or vertical saw and is focused on producing efficient cutting patterns from lists of part sizes and available materials (boards).

It is Windows software running on a single PC at a time.

Express - at a glance

UNIT-BASE MEL-CHIP-18MM 585.0 x 470.0 25
UNIT-DRWR MEL-CHIP-18MM 870.0 x 585.0 22
CAB-PLINTH TEAK-LAM-18MM 495.0 x 150.0 18
CAB-BACK TEAK-LAM-18MM 710.0 x 405.0 28
UNIT-DOOR MEL-CHIP-18MM 620.0 x 495.0 16

BRD/01 MEL-CHIP-18MM 2440.0 x 1220.0 250
BRD/02 TEAK-LAM-18MM 3050.0 x 1220.0 424



This is how to work with Express:-

- Create a New cutting list
- Enter the part sizes, material and quantities required
- Enter the available board sizes

Or Import the part details from file



Optimise

- Review and print/export the results
- Use the Cutting instructions to set the saw

What is Optimising?

The aim of the optimiser is to produce the most efficient patterns in terms of cost. This depends on:-

- Cutting list sizes
- Constraints on cutting (trims, saw blade thickness)
- Board sizes available
- Material costs

The process of optimising weighs all these factors and produces a set of cutting patterns.

A tour of Magi-Cut V12 Express

As an introduction to the software we enter a cutting list, optimise it, and look at the results.

If Express is not yet installed - look at the section: 'Setup (install)'

(It may be helpful to read through this guide before installing the software to become familiar with the overall operation of the program).



To run the program click on the icon on the desktop

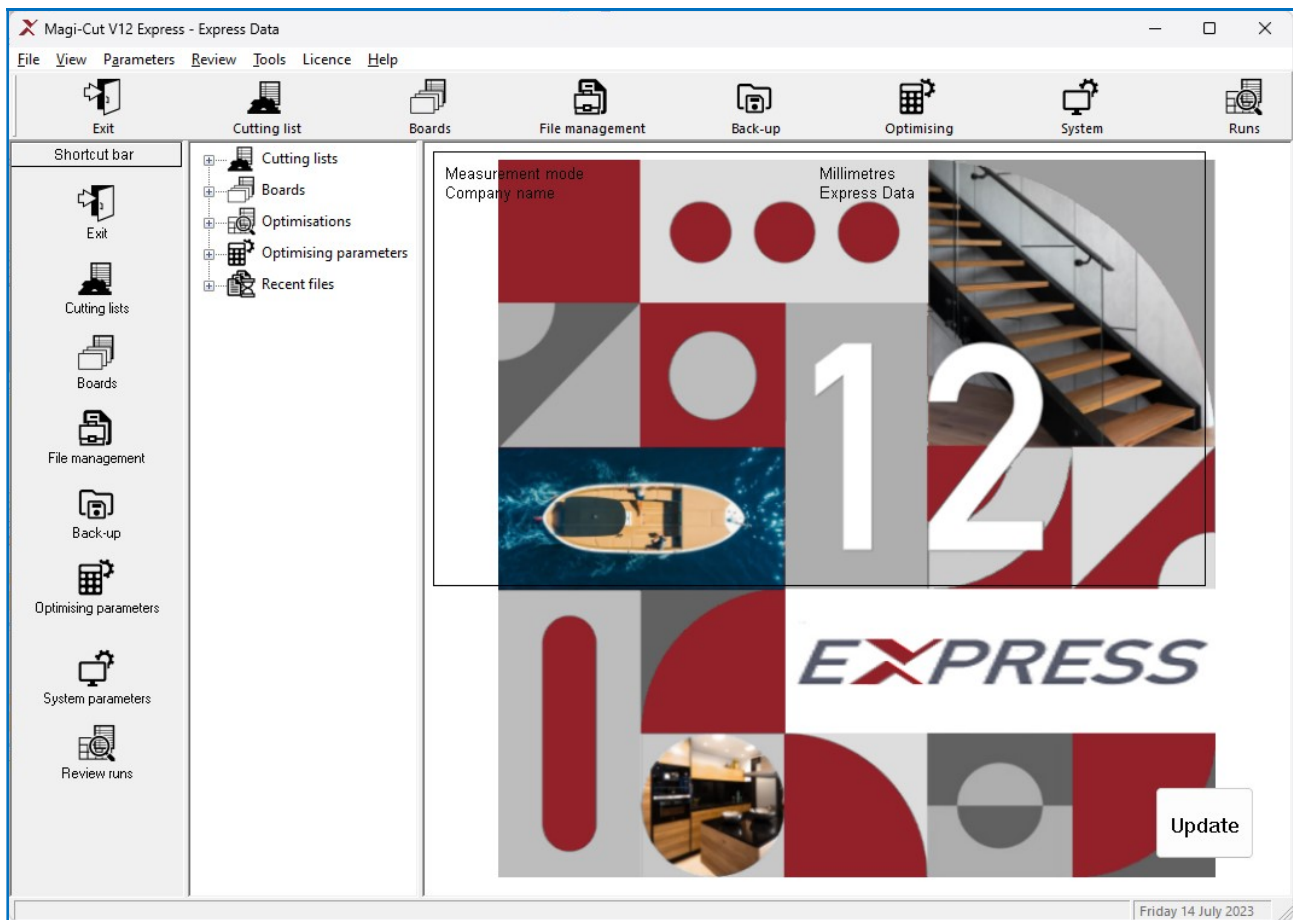
The first screen is the 'Splash' screen which appears for a few moments.



The program moves automatically to the Main screen.

Main screen

This is the command centre of the system. Access all the options and choices from here.



Note - A set of demonstration data is included when the program is setup.

At the far left is a stacked ToolBar (Shortcut Bar) giving quick access to each section of the program.

At the centre left is a tree/index showing the various options and existing data.

There is also a top toolbar and menu options to access all the other program features.

The other section of the screen optionally shows an information panel and a pane showing the contents of the currently selected file, for example, a cutting list.



Measurement mode - The program works in millimetres, fractional inches, or decimal inches. The operation of the software is the same in each case except that fractional inches are displayed and entered in fractional format (44 x 61-1/4, 96 x 48-1/2).

This tour uses: **Millimetres**.

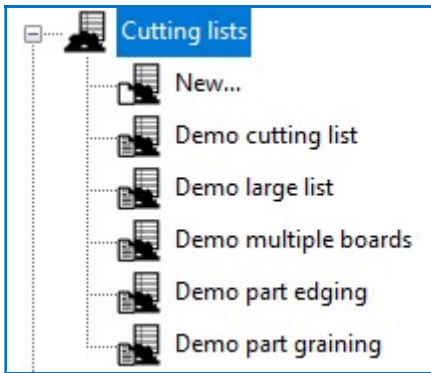
Note - arrange the screen to suit your way of working with the **View** menu option and by adjusting the size of each pane with the mouse (place the cursor at the edge of a pane to display the grab handles).

First time - If using the software for the first time - check the Serial number is correct and click on the Licence button to check the details of the software licence agreement. These are options on the **Help** menu (**Help - About**, **Help - Licence agreement**)

Enter a cutting list

To enter a list of sizes:-

At the tree open up the 'Cutting lists' branch (click on the + symbol).



- Double click on the **New...** option

The program moves to the Cutting list screen and shows a new blank list.

At the 'Title' box enter a title for the list.

Parts										
	Description	Material	Length	Width	Quantity	Grain	Edge	Info 1	Info 2	Info 3
Global										
1.										
2.										
3.										
4.										
5.										
6.										
7.										
8.										

Boards									
	Board	Material	Length	Width	Thickness	Information	Quantity	Cost	Grain
Global									
1.									
2.									
3.									
4.									

(If the 'Title' box is not visible - select: *View - Properties* to switch on the Title box)

- Move to the line labelled 1 in the 'Parts' section (use the mouse or **Tab**)
- Enter the part details including the quantity required

The details to enter for each part are as follows:-

Description - Any code or short description of the part.

Material code - A code for the board material to use for that part.

Magi-Cut V12 Express uses this to match up the parts with the available boards in the board list. Each board size and material needs a unique code. For example:-

MEL-CHIP-18MM (melamine faced chipboard 18mm thickness)
 MED-DEN-FIBRE-18 (medium density fibre board 18mm thickness)

Sizes - the length and width of the part.

Quantity - the quantity of the part required for this job

Grain - the material grain of the part

Y - grained (grain runs with length of the part)
N - no grain (part can be placed either way)
X - grained (grain run across the width of the part)

White melamine typically has no grain but Teak laminate is grained. The program uses the grain setting to make sure that each part is correctly laid out on the board and where the grain needs to run along the length of the part it does so.

Global line - the line at the top of the list is called the global line. This can be used to provide a common answer for every part in the list for a given field - in this example the over and under percentages are set to 0 percent for all parts as they are not used in this tour.

After entering a few sizes the 'Parts' section should be similar to the following.

Parts										
	Description	Material	Length	Width	Quantity	Grain	Edge	Info 1	Info 2	Info 3
Global										
1.	BTH-CAB-BACK	MFC18-TEAK	664.0	564.0	4	N	0000			
2.	BTH-CAB-BACK	MFC18-EBONY	464.0	564.0	3	N	0000			
3.	BTH-CAB-BOTTOM	MFC18-EBONY	464.0	144.0	3	N	0000			
4.	BTH-CAB-BOTTOM	MFC18-TEAK	664.0	144.0	4	N	0000			
5.	DDC-BOTTOM	HARDBOARD-4MM	964.0	564.0	4	N	0000			
6.	BTH-CAB-DOOR-LEFT	MFC18-TEAK	349.5	450.0	4	N	0000			
7.	BTH-CAB-DOOR-LEFT	MFC18-EBONY	249.5	450.0	3	N	0000			
8.	BTH-CAB-DOOR-RIGHT	MFC18-TEAK	349.5	450.0	4	N	0000			
9.	BTH-CAB-DOOR-RIGHT	MFC18-EBONY	249.5	450.0	3	N	0000			
10.	BTH-CAB-END-LEFT	MFC18-TEAK	162.0	600.0	4	N	0000			

We can now enter some board sizes.

- Move to the Boards section (click on row 1 with mouse or **Ctrl Tab**)
- Enter details of the available boards

At the cutting list the material codes used were:-

MFC18-TEAK
MFC18-EBONY
HARDBOARD-4MM

The details to enter for each board are:-

Board - a board code or description

Material - a material code

The program uses this to match up the parts with the available boards in the board list. Each board size and material needs a unique code

Sizes - the length and width of the board

Information - any extra details about the board (e.g. supplier, quality)

Quantity - the number of each board size in stock

Cost - the cost per square area (metre) of the material.

Enter an accurate cost as the program uses this to assess the pattern layout.

Grain - the material grain of the board

Y - grained (grain runs with length of the part)
N - no grain (part can be placed either way)
X - grained (grain run across the width of the part)

Boards									
	Board	Material	Length	Width	Thickness	Information	Quantity	Cost	Grain
Global									
1.	MFC18-TEAK/01	MFC18-TEAK	2440.0	1220.0	18.0		32	3.110	Y
2.	MFC18-TEAK/02	MFC18-TEAK	3050.0	1525.0	18.0		22	3.110	Y
3.	MFC18-EBONY/01	MFC18-EBONY	3050.0	1525.0	18.0		20	5.760	Y
4.	MFC18-EBONY/02	MFC18-EBONY	2440.0	1220.0	18.0		25	5.210	Y
5.	HARDBOARD-4MM/01	HARDBOARD-4MM	2440.0	1220.0	4.0		90	0.890	N

Save the Cutting list

When data entry is finished - save the cutting list. To do this:-



- Select the Save symbol

The program prompts to save the cutting list to a file.

- Enter a file name

- Select **OK** to confirm the save

Note - the title can be changed here if necessary

Import - cutting list

In the cutting list program, there is an Import option (File menu and toolbar icon). Selecting this will bring up a dialog showing all the files in the current path. The path can be changed via the Change path button at the top of the dialog. Importing the data can provide an alternative to inputting all of your cutting list data manually.

An Import file can be either a text based file (CSV) or an Excel file (XLS or XLSX).

Once a file is selected and the Ok button is pressed the following dialog will appear as follows:

Import - Cutting list

Parts

Describe the data in your source file

Starting at the top of your file, how many header lines need to be skipped?

Is your data separated by commas or another character? - please specify

Click required column headings and assign to part list fields

	Material	Description	Length	Width	Quantity	Grain	Edge
1.	MEL-CHIP-18MM	UNIT-END-LEFT	800.00	560.00	4	0	B000
2.	MEL-CHIP-18MM	UNIT-END-RIGHT	800.00	560.00	4	0	0B00
3.	MEL-CHIP-18MM	UNIT-BASE	964.00	560.00	4	0	B000
4.	MEL-CHIP-18MM	UNIT-RAIL-REAR	964.00	96.00	4	0	\w\w0
5.	MEL-CHIP-18MM	UNIT-RAIL-FRONT	964.00	96.00	4	0	Bw00
6.	MEL-CHIP-18MM	UNIT-BACK	964.00	684.00	4	0	0000
7.	MEL-CHIP-18MM	UNIT-DIVIDER	560.00	684.00	4	0	00w0
8.	MEL-CHIP-18MM	UNIT-ADJ-SHELF	469.00	553.00	12	0	Bw\w
9.	MFC18-BEECH	UNIT-DOOR	494.00	714.00	16	1	BBBB
10.	MFC18-BEECH	UNIT-PLINTH	964.00	80.00	8	1	0000
11.	MEL-CHIP-18MM	BU-END-LEFT	800.00	560.00	4	0	M000

OK Previous Help Cancel

Note - If the wrong filename has been specified then the previous button can be used to go back and select a different filename.

The first parameter is used to specify if there any header lines in the import file that need to be skipped.

The second parameter is what is the separator character (usually a comma, and disabled for Excel based files).

At this point each relevant column can be assigned to a column in the cutting list. This is done via the combo box at the top of each column. Once a column is defined it will turn cream coloured.

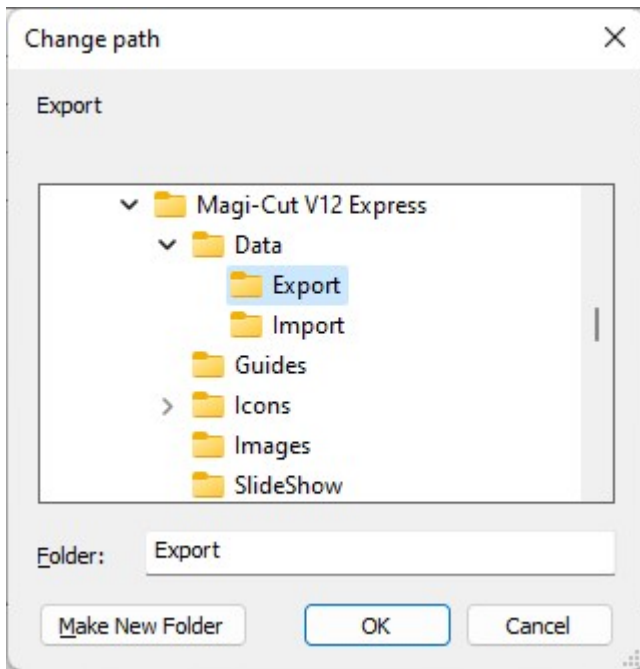
Once all the relevant columns have been specified, the Ok button can be selected and the file will be imported in.

Notes:

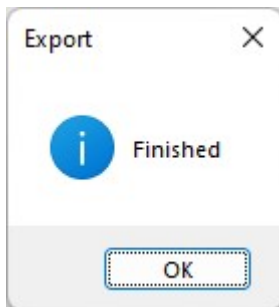
- The column details will be stored and reused for subsequent imports so they do not need to be set the next time.
- Excel imports will only import from the 1st sheet in the file.
- Import will automatically discern if a txt file is ASCII or UNICODE based.
- The import process will utilise the current locale decimal separator and convert it to a decimal point.

Export - Cutting list

In the cutting list screen, there is an Export option on the file menu. If a cutting list is on screen and this option is selected then the following folder selection dialog will appear:



Once a folder is selected a CSV file named after the current cutting list will be generated in that location and the following message will be displayed:



Note - If the file already exists, then an overwrite Y/N dialog will be displayed first.

The format of the CSV would have lines as follows:

description,material,length,width,qty,grain,edging,fixed1,fixed2,fixed3

Note - the separator between each value is the same as the one specified for import cutting lists. The decimal point for the length/width values is set based on the current PC's specific decimal separator.

Optimise

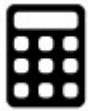
Once you have entered a cutting list you are now ready to optimise.

Along with the Part and Board sizes the program also requires values for the cutting constraints, for example, the 'Saw blade thickness', 'Size of trims' etc. These are set via the 'Optimising parameters'.

There is a default set of parameters which the program uses automatically - these are used for this tour.

(There is a section on how to adjust the parameter values later in the guide).

At the cutting list screen:-



- Select the optimise symbol

This starts the optimisation.

A small window appears while the optimisation is in progress. Use **Cancel** to abandon the optimisation.

The program shows the results.

The first screen shown is an overall summary of the optimisation called the 'Management Summary'. The optimisation results (a set of patterns) is also called a 'run' and this section of the program for looking at the results is called 'Review runs'.

The screenshot shows a software window titled 'Review runs' with a menu bar (File, Edit, View, Settings, Summaries, Help) and a toolbar with various icons. A sidebar on the left lists summary types: Management summary, Part summary, Board summary, Pattern summary, Input summary, Material summary, and Pattern preview. The main area displays the 'Management summary' for 'Example of part edging'. It includes a title bar, a subtitle 'Demo Part edging', and a revision string 'Revision 5 : 14 Jul 2023 10:46 : Optimised by Stephanie'. Below this is a table with two sections of data.

Description	Quantity	m2	m3	Percent	Cost	Statistic	Value
Parts produced	139	24.73	0.43	83.07%		Number of patterns	8
Scrap		5.04	0.08	16.93%		Headcut patterns	1
Sheets used	10	29.77	0.51	100.00%	92.76	Rotated patterns	0
						Recut patterns	5
Edge K	8.3M					Waste (%Parts)	20.38%
Edge R	16.9M					Waste (%Boards)	16.93%
Edge T	109.8M						
Edge W	32.5M						

Once the optimisation is complete the results are stored and can be reviewed and printed as required.

The Management summary report shows the overall statistics for the run. For example:-

Number of parts produced

Number of boards used
Overall cost
Overall yield

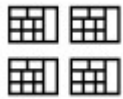
Use the Navigation bar to look at the other reports.



The other reports are:-

Part summary
Board summary
Pattern summary
Input summary
Material Summary
Run Summary
Pattern preview
Patterns

The stacked toolbar at the left can also be used to access the reports and to view the patterns.



- Click on the pattern preview symbol

A thumbnail preview is shown.

Review runs

File Edit View Settings Summaries Help

Summaries

Management summary

Part summary

Board summary

Pattern summary

Input summary

Material summary

Pattern preview

Pattern preview

Example of part edging

Demo Part edging

Revision 5 : 14 Jul 2023 10:46 : Optimised by Stephanie

Ptn:1 Board:1.MFC18-TEAK/01 Size:2440.0 x 1220.0
Qty:1 Material:MFC18-TEAK

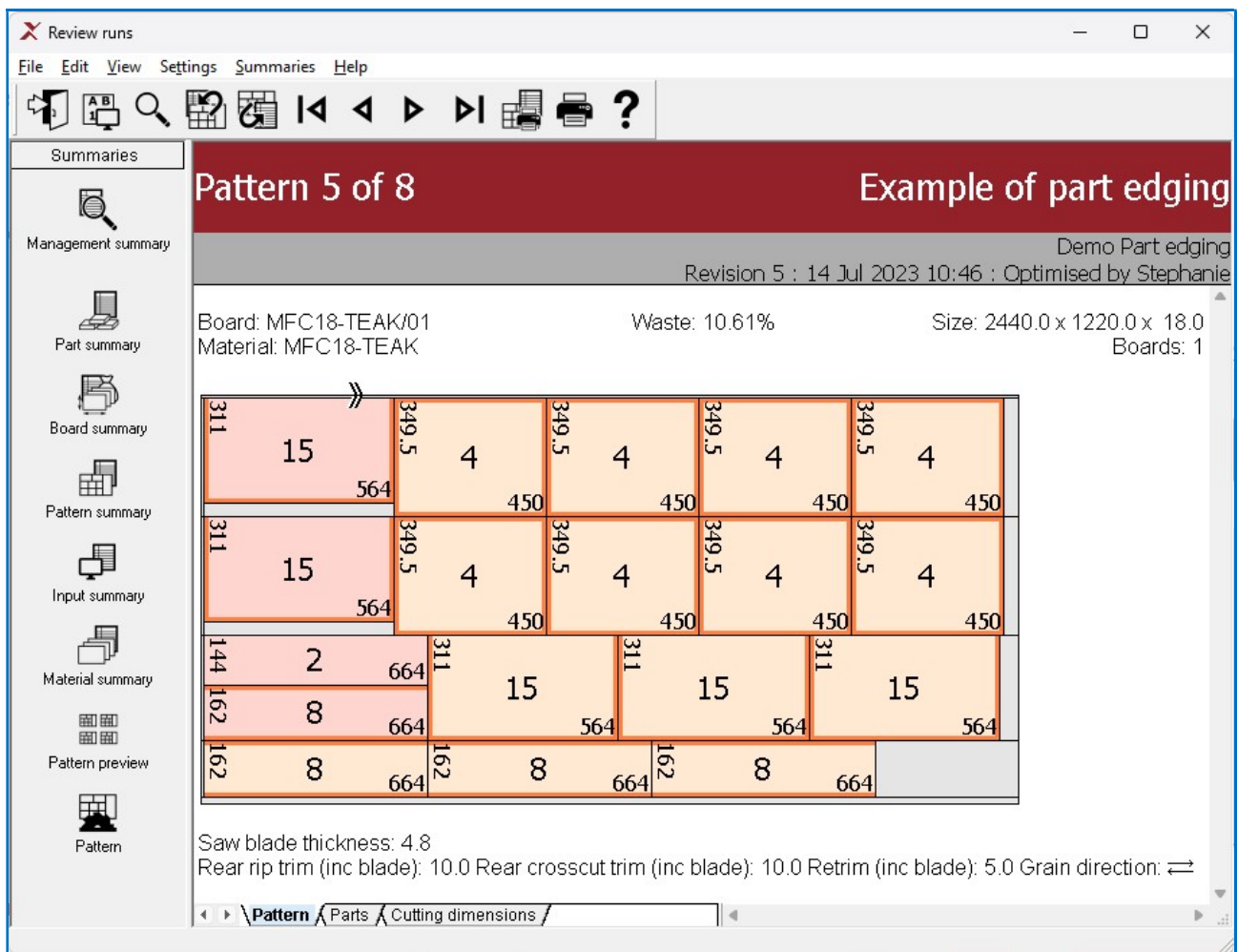
Ptn:2 Board:1.MFC18-TEAK/01 Size:2440.0 x 1220.0
Qty:1 Material:MFC18-TEAK

Ptn:3 Board:1.MFC18-TEAK/01 Size:2440.0 x 1220.0
Qty:1 Material:MFC18-TEAK

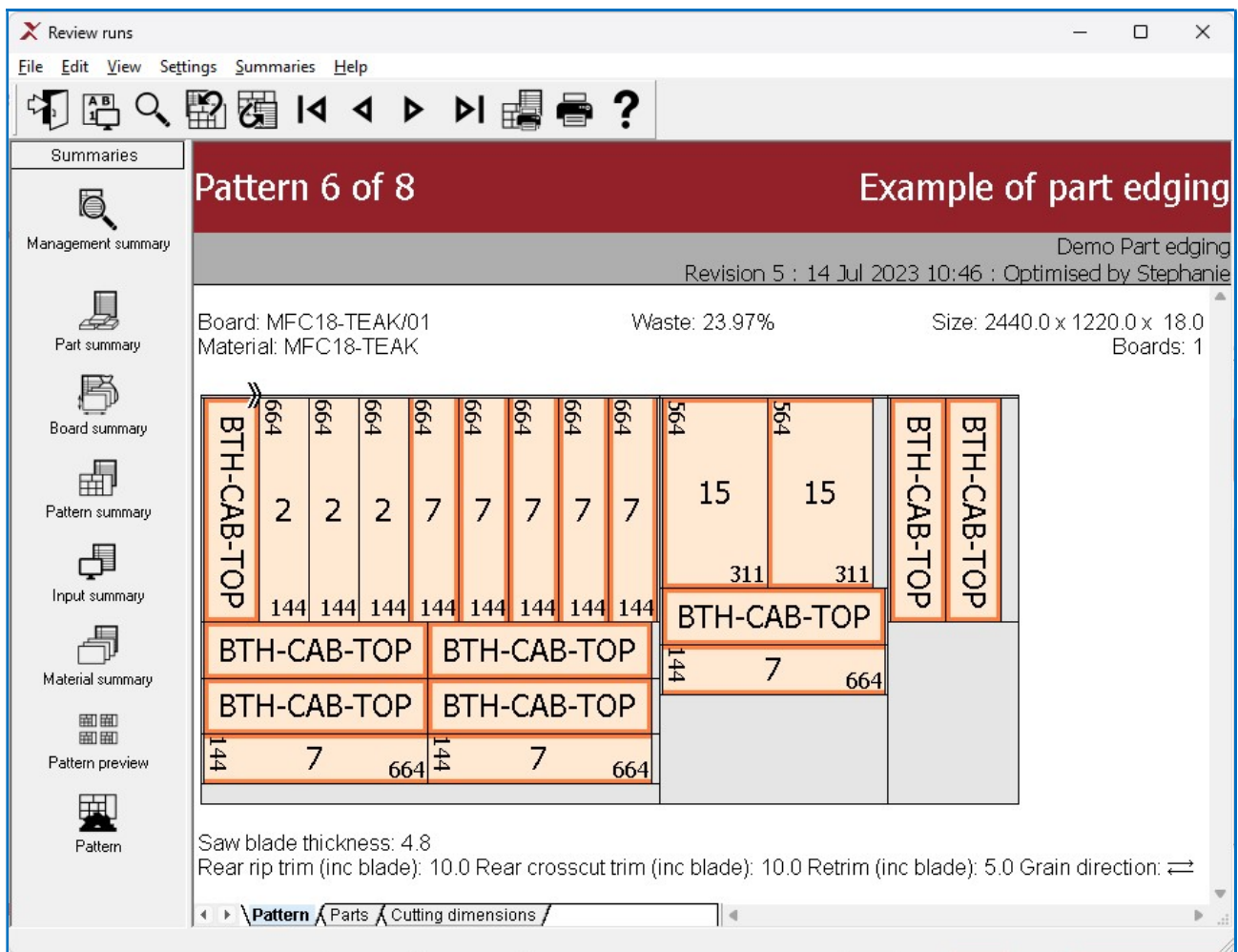
Ptn:4 Board:1.MFC18-TEAK/01 Size:2440.0 x 1220.0
Qty:1 Material:MFC18-TEAK

The preview shows all the cutting patterns grouped by material code.

- Double click on a thumbnail to see the full pattern

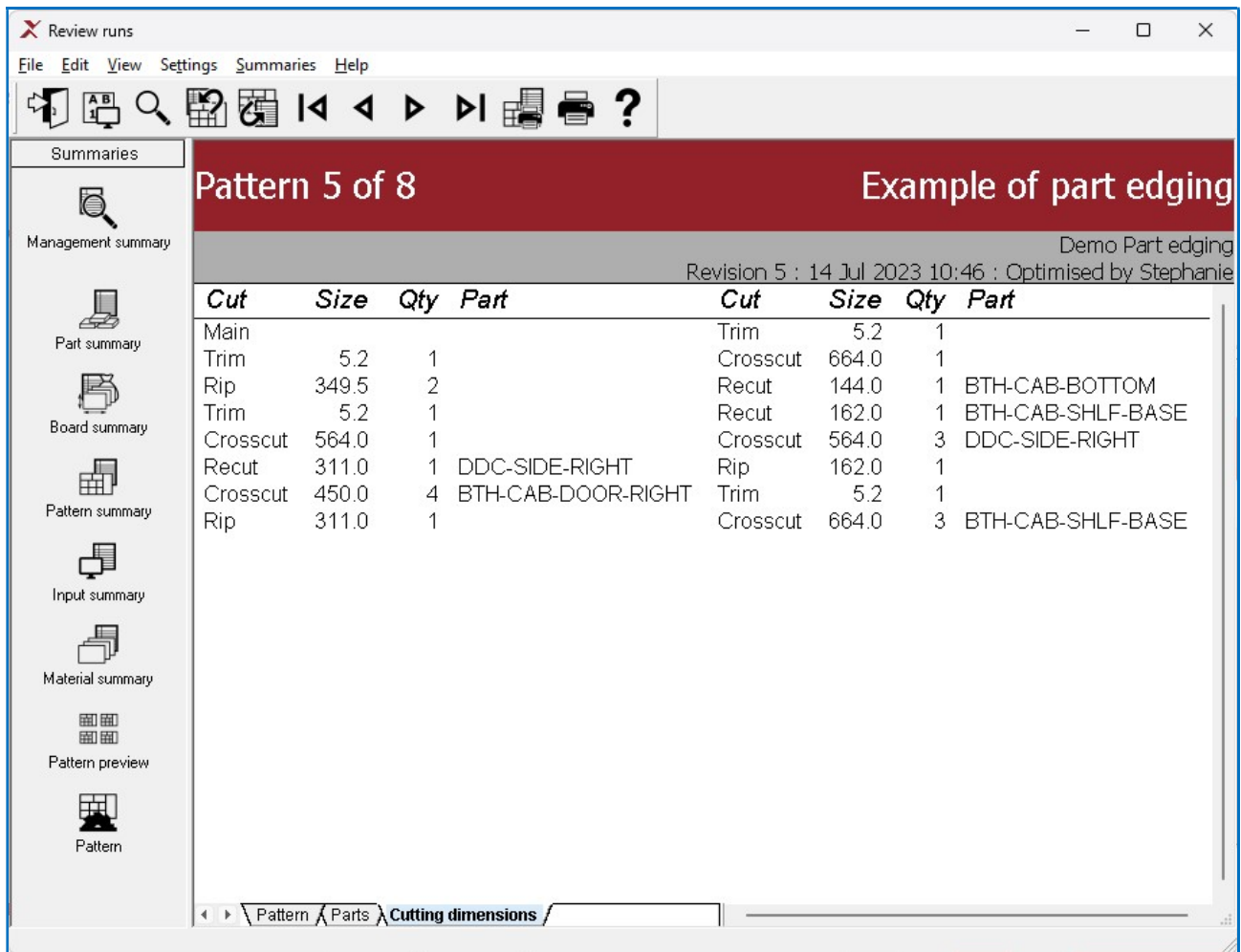


The waste areas are shown with hash lines (or via a colour). The patterns can include recuts and head cuts (as shown below).



The tab bar at the foot of each pattern shows the other pattern information, Part sizes and Cutting instructions.

The cutting instructions are for a sliding table saw and can be used to set the saw for cutting.



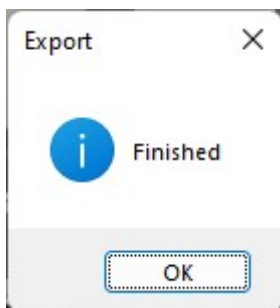
Export - Summary

In review runs the file menu has an Export current summary sub-menu with the same options:

This enables you to create files that you can use outside of the software on a report by report basis.

PDF
XLS
XLSX

Selecting any of these will bring up the folder selection dialog and after export the following dialog will be displayed:



The export filename will be named as follows:

<runname>-<summary name>.[PDF|XLS|XLSX]

e.g. basic cutting list-management summary.XLS

Exporting a pattern drawing to XLS or XLSX will create a <runname>-<ptnnum>.jpg file

Note - Export to XLS/XLSX files is not available for Pattern preview.

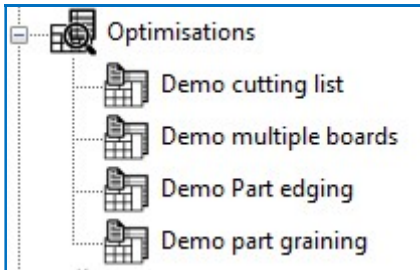


- select exit to leave Review runs

The program returns to the Main screen.

At the main screen open up the 'Optimisations' branch of the tree. The recent optimisation is now in the list.

This run can be reviewed at any time by selecting the item.



Note - if the parts or boards are changed after an optimisation the results are no longer valid and the lists should be optimised again.

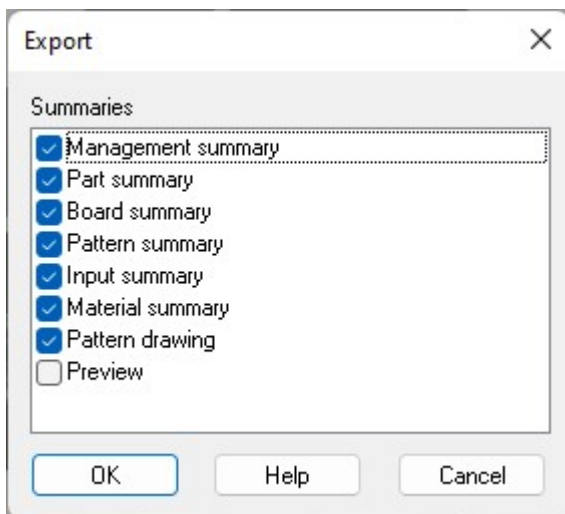
Export - run

On the main menu under the file menu there is an Export Runs sub-menu with the following options:

- PDF
- XLS
- XLSX

This enables you to create a number of files in one go that can be used outside of the software (these are similar to the files you can export from within review runs individually).

After selecting one of these a dialog will appear to select a run and after the run is selected the following dialog is shown from where you can select which summaries appear in the export file.



Initially this dialog will have all the possible summaries for the export type checked, but if any are unchecked then the next time export runs is done, it will reflect those changes.

After this dialog is the folder selection dialog and after that the export takes place and the following dialog is displayed.



A PDF, XLS or XLSX file will have been generated in the folder selected for the selected run.

The PDF file will have page breaks between each report. The excel files will have summaries on separate sheets and the folder will also contain JPG files for the pattern drawings.

These JPG file will be names as follows:

<runname>-<ptnnum>.jpg

e.g. Basic part list-0001.jpg

End of Tour

The tour above has shown the principal operations of Magi-Cut V12 Express and how to use it. The later sections give more details about the program.

2. Setup (install)

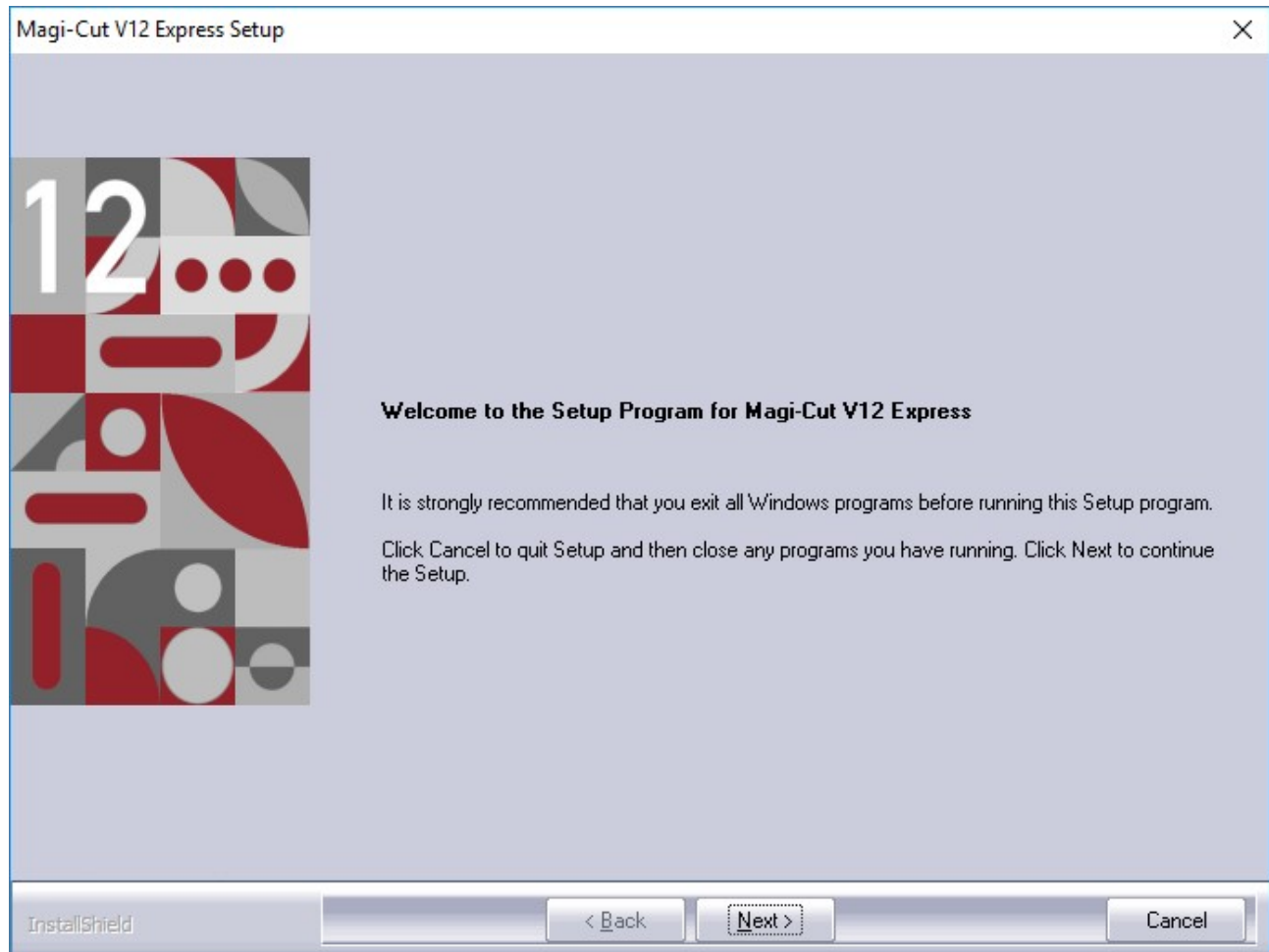
Magi-Cut V12 Express is downloaded as a single file named:-

Magi-Cut V12 Express Setup.exe

- Click on this program to start the setup.

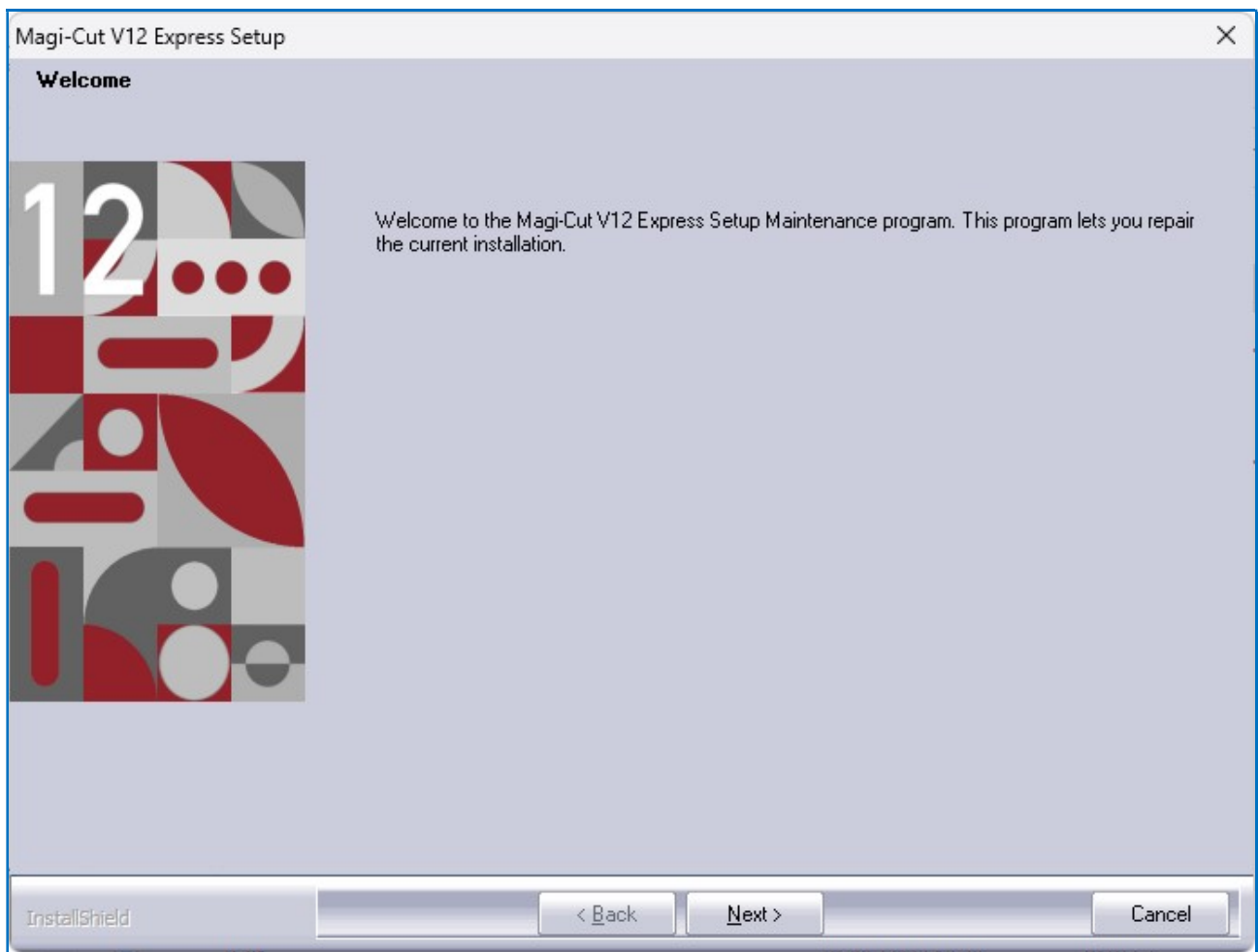
Follow the setup (install) instructions carefully. When finished the software and demonstration data is ready for use.

The Setup program displays the first screen:-

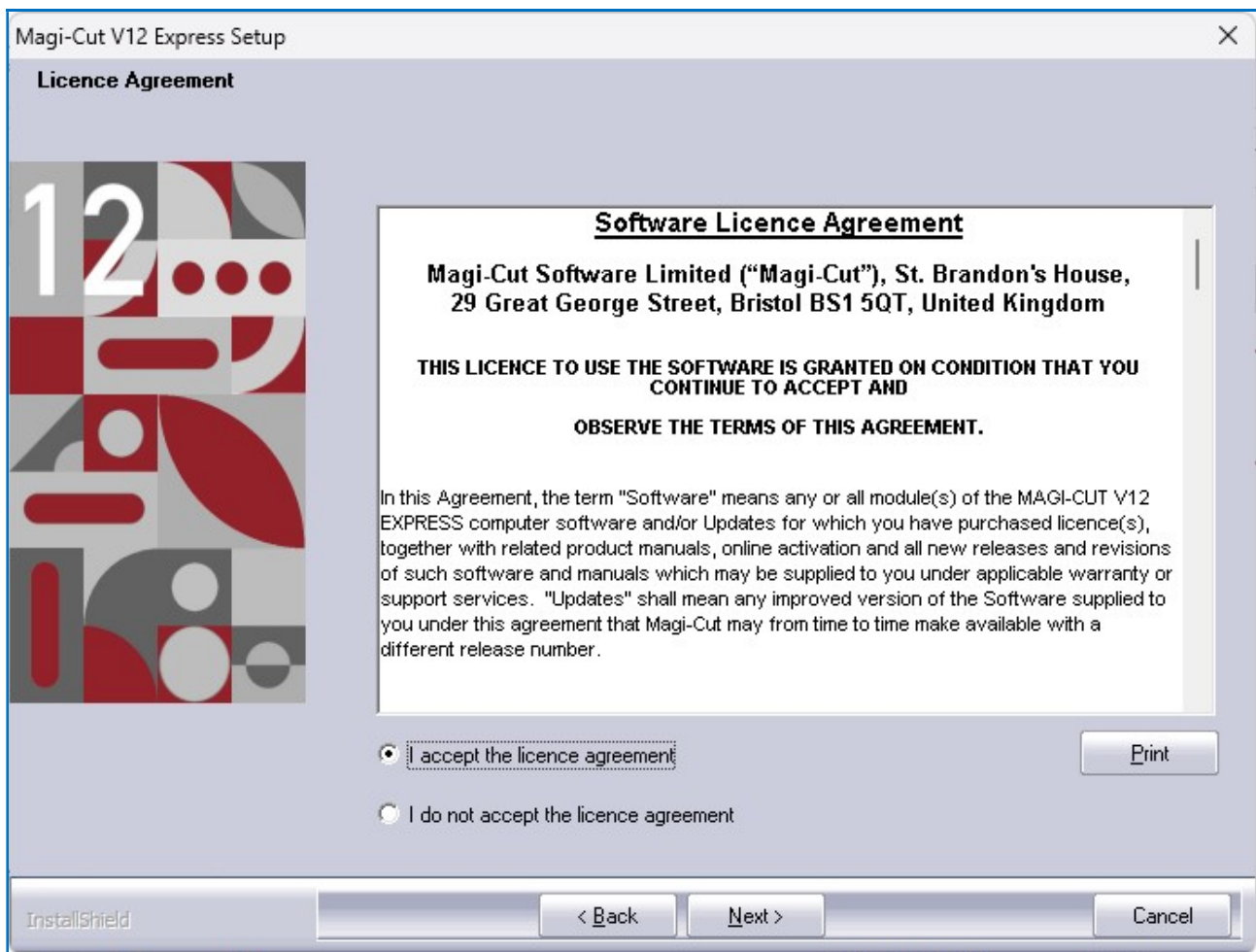


The above screen is NOT shown if the program is already installed on the PC.

Instead the program prompts to update/repair the existing installation.



- Select **Next** to continue (**Cancel** to abandon)



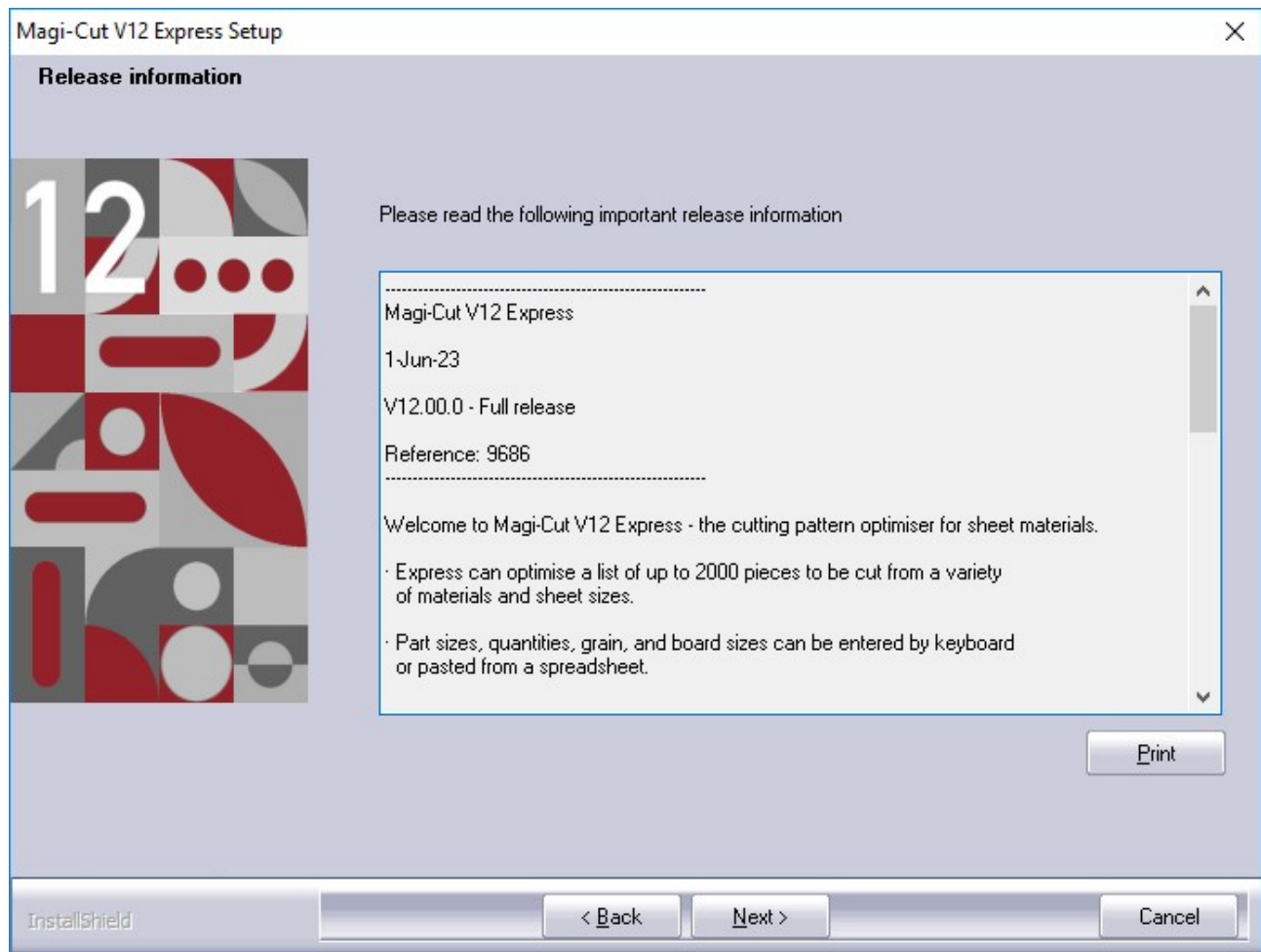
The screen shows the Licence agreement for the UK. Use the scroll bar to navigate up and down the document (use **Print** to make a copy)

- Check the radio button to accept the agreement

The agreement must be accepted for setup to continue

- Select **Next** to continue

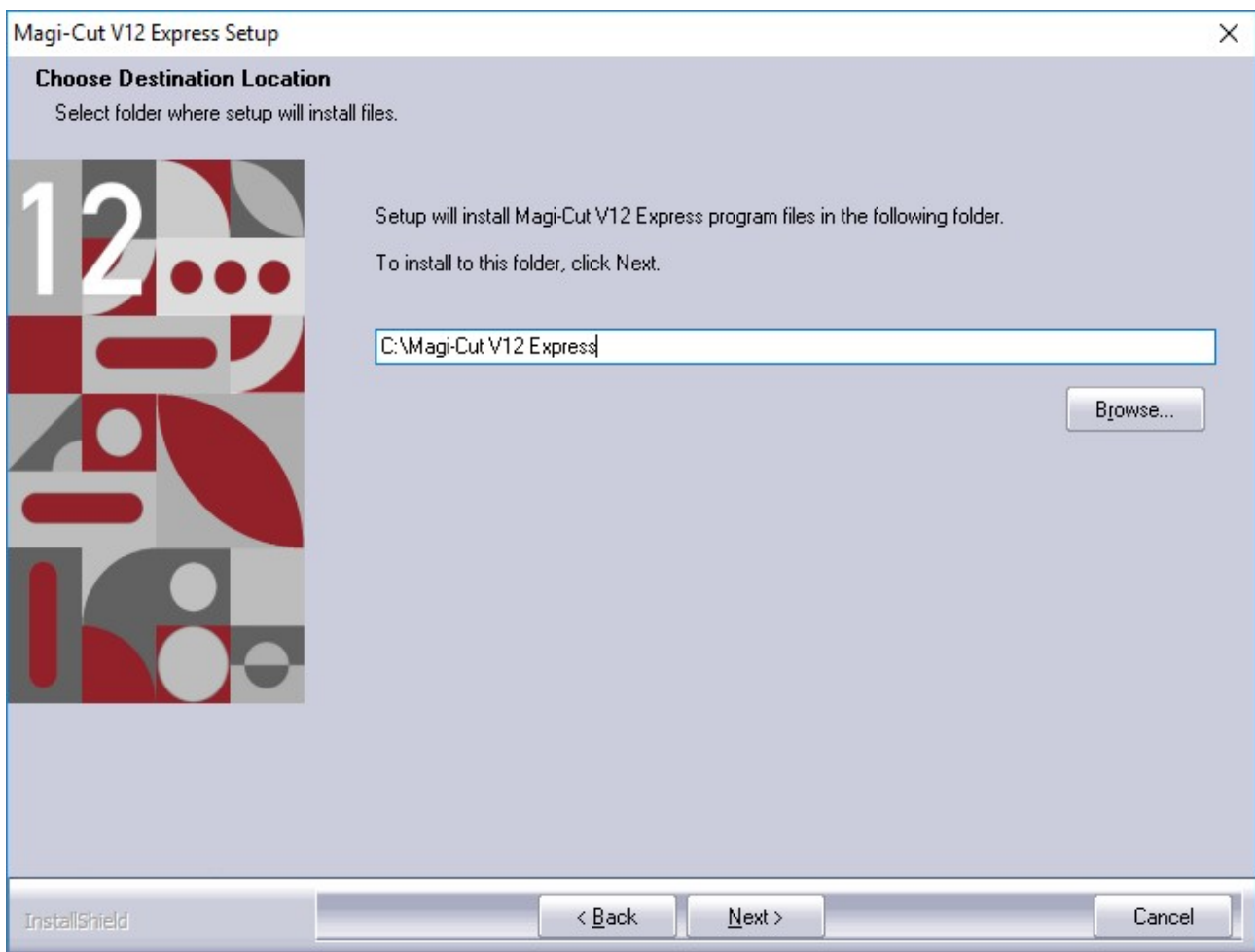
The next screen shows the version number and minimum hardware requirements for the program (use the **Print** button to print a copy - if required).



- Select **Next** to continue

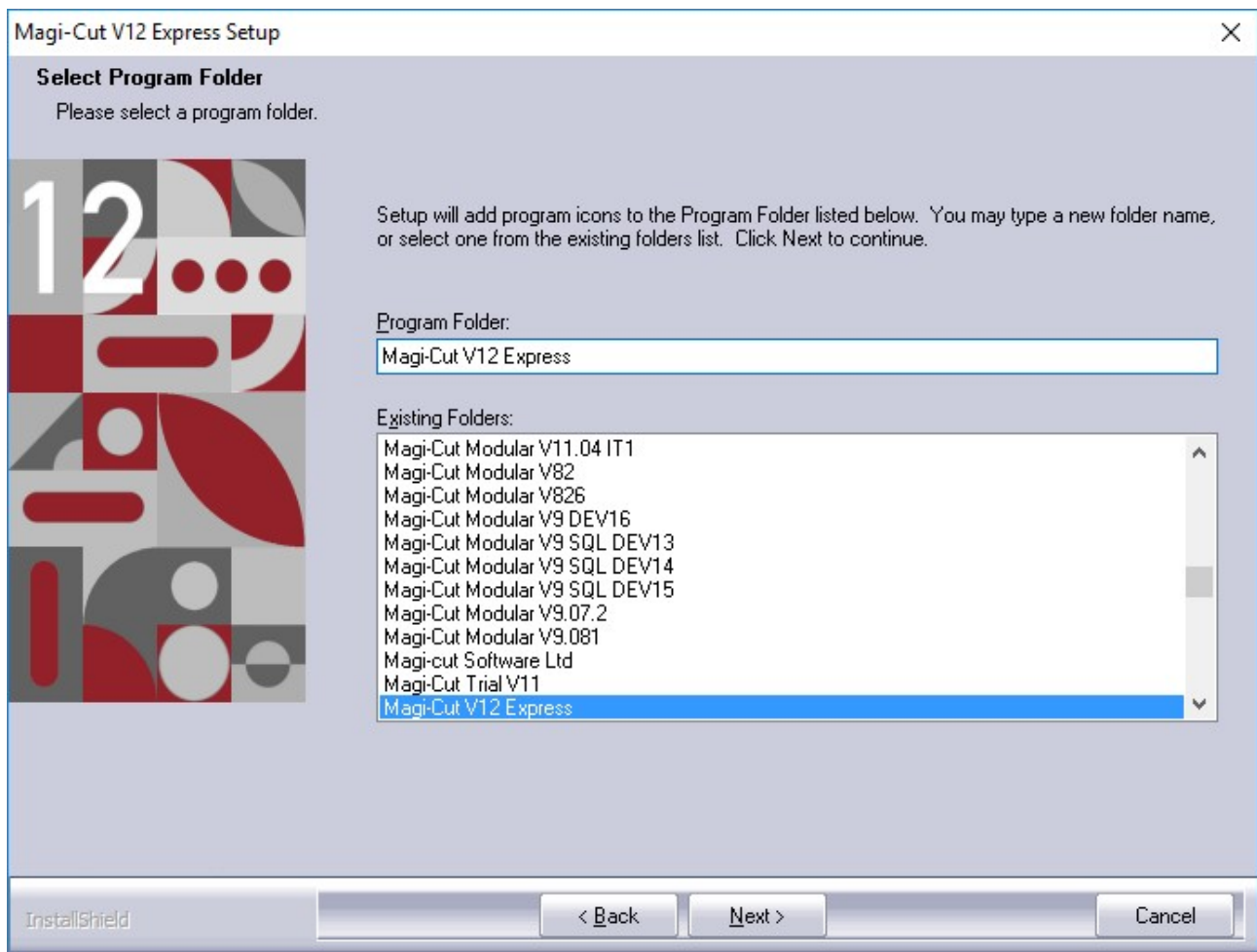
Then you will be asked for the location you wish to install the software (the default is shown)

To select another folder use the **Browse** button.



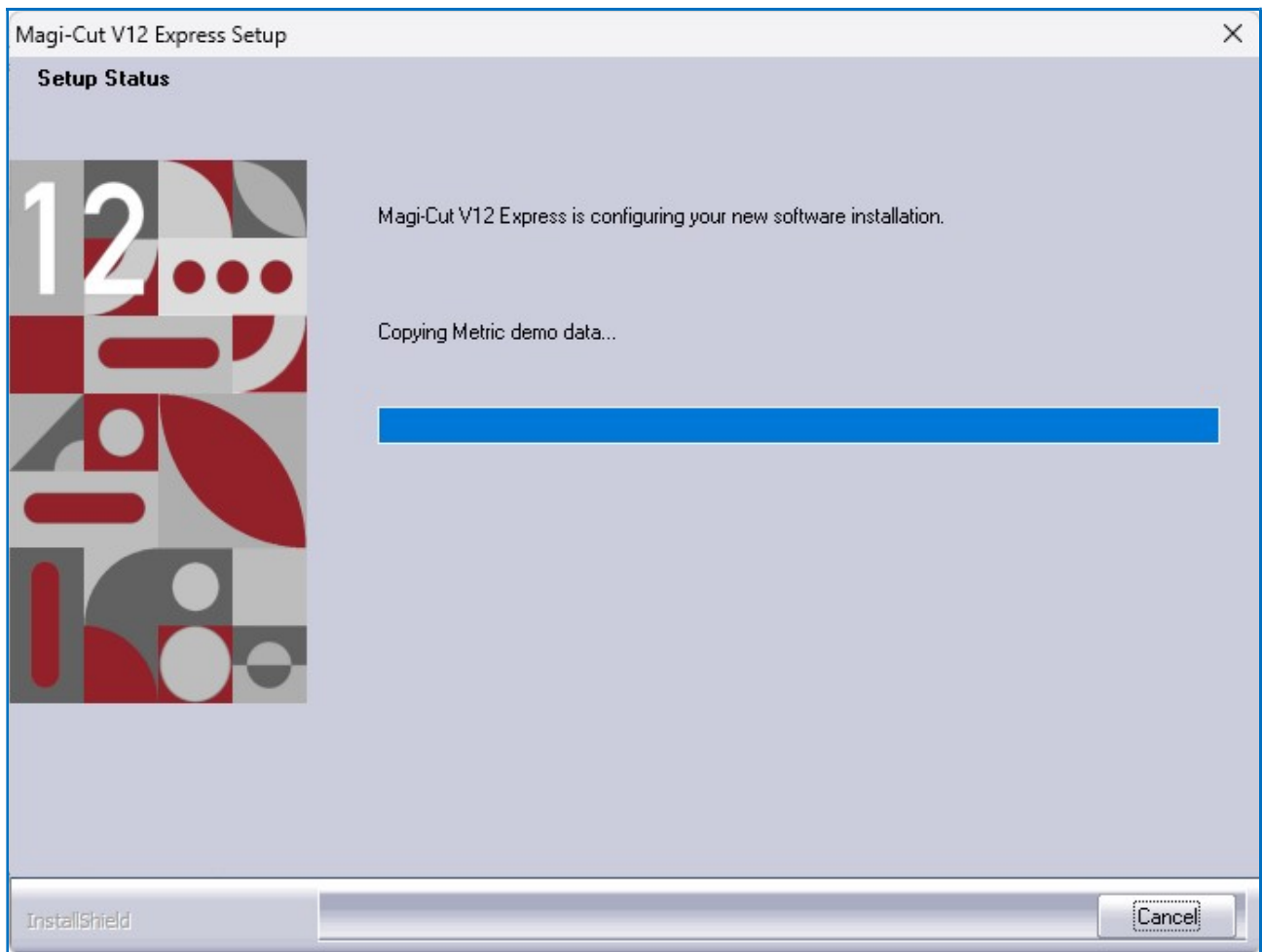
- Select **Next** to continue

The installer will then prompt you for the program group name (again the default is shown).

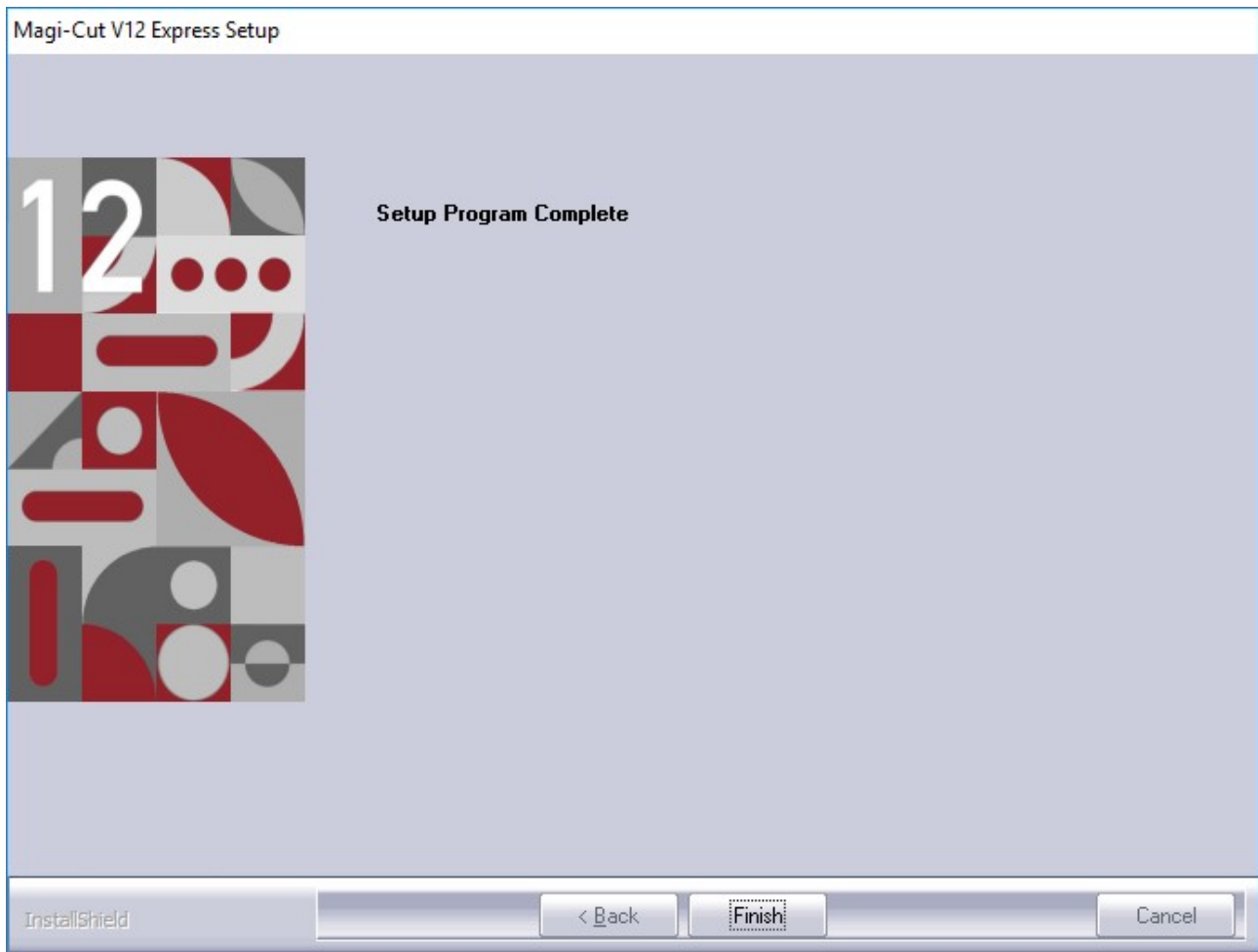


- Enter the name for the program folder (if required) or select a different folder.
- Select **Next** to continue

The Setup program proceeds with the installation.

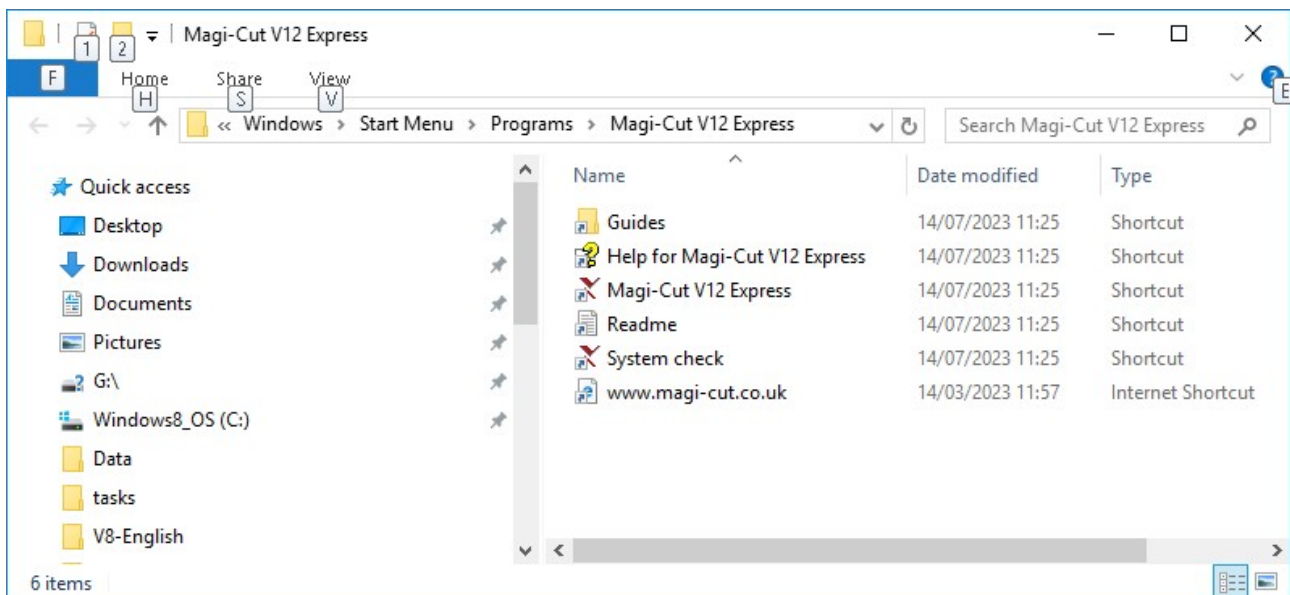


When Setup is finished the final screen is displayed.

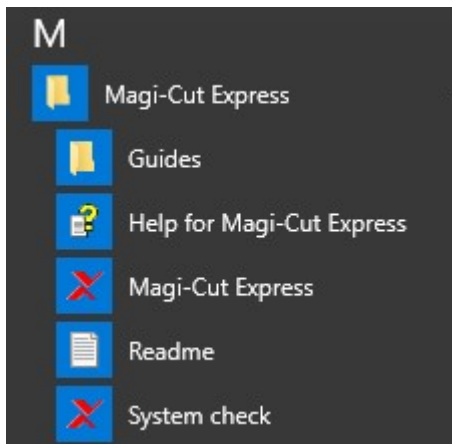


- Select **Finish** to close the Setup program

The program displays the program group.



A shortcut is installed on the desktop and the program group is added to the Windows 'Programs' bar (at the Windows 'Start' button)



- Close the program group

Note - To uninstall use the Add/Remove (Program features) option at the Windows control panel. There is no option in the program group to remove the program.

Security - For the trial version the first screen shows the remaining days for the trial; there are other options for purchasing the program. Press the 'Continue' button to move to the main screen. For the purchased system the program moves directly to the main screen; it is protected by a software licence.

Program does not run

If the program does not run there are only a few main causes.

- Program was not installed correctly
- Hardware is below minimum requirements
- The Trial version has expired (it runs for a limited number of days)

Program setup problems

It may be the program setup failed (this is quite rare unless the setup was cancelled)

- Re-try the install (in this case install to a different location on the PC)

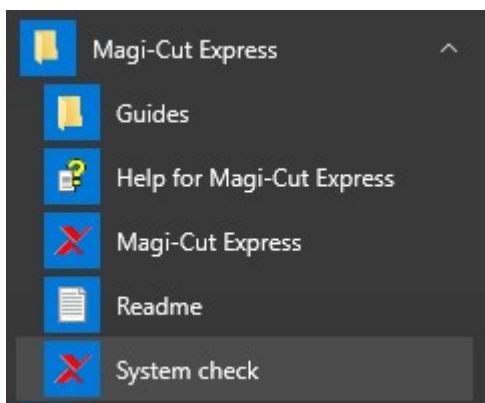
The state of the program can be checked (if the Setup finished Ok) by running the 'Check' program.

Use Windows Explorer to move to the program directory (where the program was installed e.g. C:\Magi-Cut V12 Express).

Name	Date modified	Type
Data	14/07/2023 11:25	File folder
Guides	14/07/2023 11:25	File folder
Icons	14/07/2023 11:25	File folder
Images	14/07/2023 11:25	File folder
SlideShow	14/07/2023 11:25	File folder
Backup.exe	14/07/2023 09:54	Application extension
Batch.exe	14/07/2023 09:54	Application extension
Bsrgui.dll	14/07/2023 09:54	Application extension
Bsrlib.dll	14/07/2023 09:54	Application extension
Bsrmch.dll	14/07/2023 09:54	Application extension
Bsntro.dll	14/07/2023 09:54	Application extension
check.exe	14/07/2023 09:57	Application extension
C12lib.dll	14/07/2023 09:54	Application extension
CloudSeats.exe	14/07/2023 09:54	Application extension
dls2dun.dll	14/07/2023 09:54	Application extension
Dlsbarun.dll	14/07/2023 09:54	Application extension

Double click on the program 'Check.exe' to run the system check.

Alternatively select the 'System Check' option from the Program group on the Windows 'Start' button.



Help

If there are problems running the program the help can still be accessed. To do this:-

Move to the directory where the program is installed

Double click on the program 'Check.exe' to run it

Click on the **Help** button (this is the full help for Magi- Cut V12 Express)

Minimum hardware

The program does NOT run on any PC below the minimum specification. The minimum specification is:-

- Processor speed 2Ghz
- Memory 2Gb (400Mb free)
- Hard disk 20GB free
- Display 1440 x 900 or higher

The supported operating systems for this version are:

- Windows 8 (32bit and 64bit versions)
- Windows 2012 Server x64 Editions
- Windows 8.1 (32bit and 64bit versions)
- Windows 2012 Server R2 x64 Editions
- Windows 10 (32bit and 64bit versions)
- Windows 2016 Server x64 Editions
- Windows 2019 Server x64 Editions
- Windows 11
- Windows 2022 Server

3. Parameters

For effective optimising the program should be set up to allow for the correct measurement mode, saw blade thickness, and trims etc. These parameter values can vary for different jobs and between companies.

Use the 'Parameters' options to set these values.

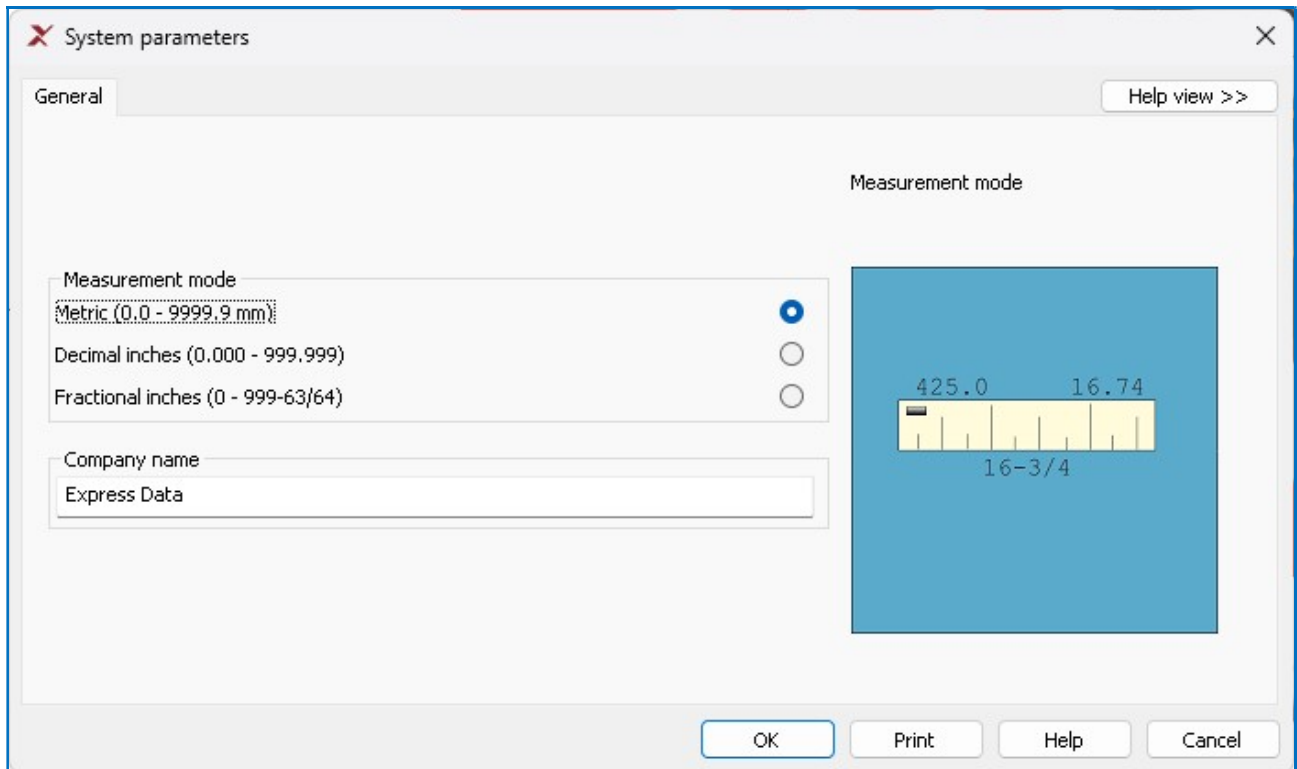
The parameters are set to reasonable default values when the program first runs but it is important to check all these values and adjust them where necessary to reflect your way of working.

There are only a few parameters to consider.

System parameters

These are basic settings for the program. At the main screen:-

- Select: **Parameters - System parameters**



- Select the measurement mode to work in.

For most users this is typically Millimetres.

- Enter a name for the Company

This name is shown on the screen and in the header/banner of most printed reports.

Note - These parameters are usually only set once and rarely need to be considered again.

Optimising parameters

Optimising parameters are important as they set the saw blade thickness, trims and type of cutting allowed. To adjust the default values for the optimising parameters, at the main screen:-

- Select: **Parameters - Optimising parameters**

Optimising parameters - Default Optimising Parameters

Trims Rules Help view >>

Set the parameters for trims

Range
0 - 999
Millimetres

Saw blade thickness

Rip and crosscut 4.8

Minimum rip trim (inc saw blade thickness)

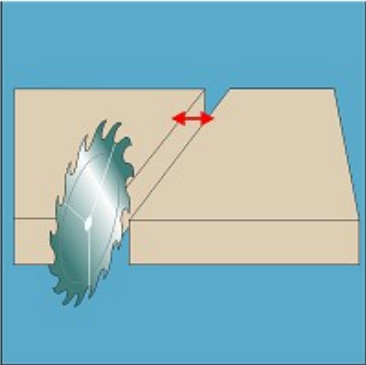
Front 10.0 Rear 10.0

Minimum crosscut trim (inc saw blade thickness)

Front 10.0 Rear 10.0

Retrim after head cut (inc saw blade thickness) 5.0

Saw blade thickness: Rip and crosscut

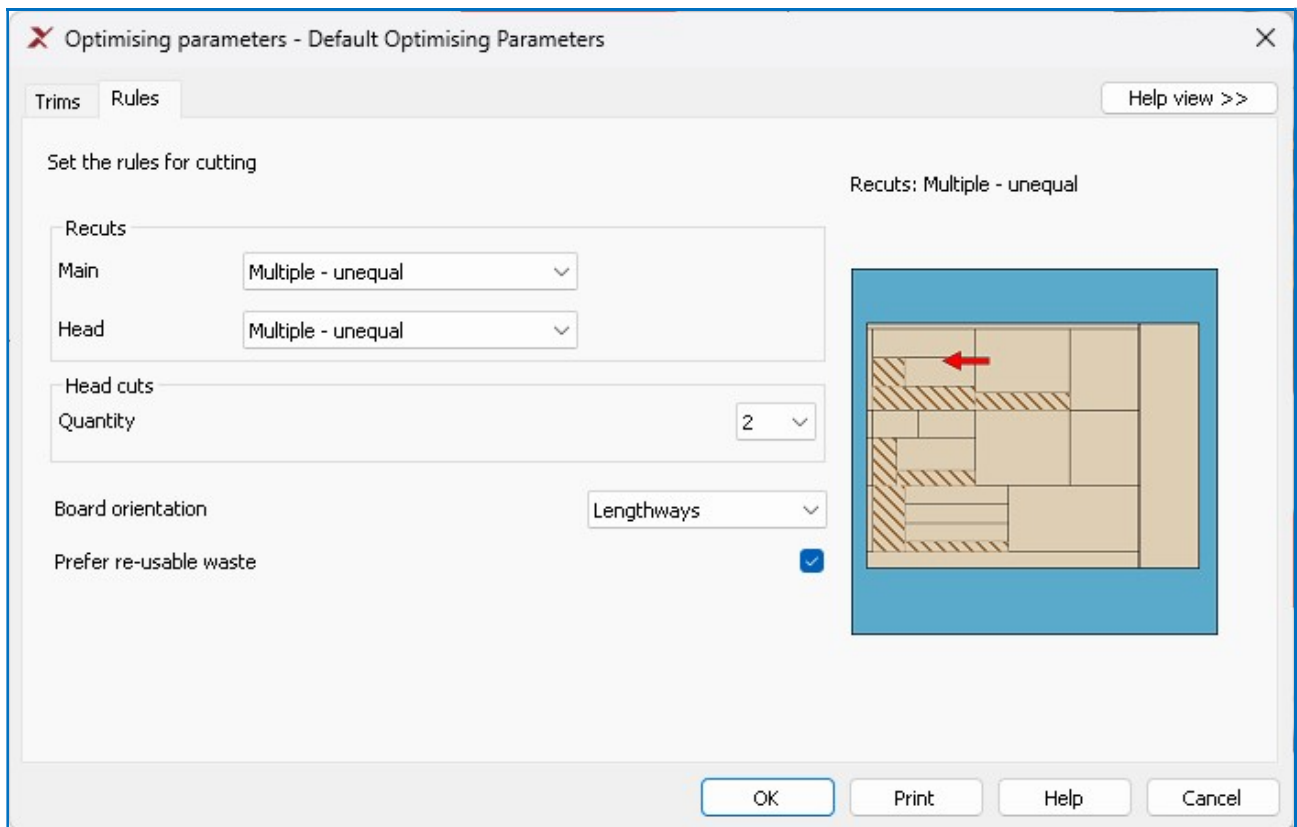


OK Print Help Cancel

Work through the values on the first page and set the required values for the saw blade thickness, front and rear trim, and retrim value.

The picture at the right gives an overview of what the parameter does (select **Help** for further details).

The second tab shows the 'Rules'. These can be used to set the cutting style.



For example, recuts can be limited to 'single recuts only' and the number of head cuts allowed can be restricted to '1'.

These default values apply to all optimisations BUT there is also an option to adjust the values for each cutting list (at the cutting list screen). This may be necessary, for example, to change the trims for one type of material, or to set 'no head cuts' for an optimisation. To do this:-

- Move to the required cutting list

Title Example of basic cutting list		
Parameters		
Parts		
	Description	Material
al		MAPLEWOOD-18MM
	PRT-001-A	MAPLEWOOD-18MM
	PRT-002-B	MAPLEWOOD-18MM
	PRT-003-C	MAPLEWOOD-18MM

- Click on the parameters button

The program displays the Optimising parameter screen (for the cutting list)

Optimising parameters - Demo cutting list

Trims Rules Help view >>

Set the parameters for trims

Range
0 - 999
Millimetres

Saw blade thickness

Rip and crosscut 4.8

Minimum rip trim (inc saw blade thickness)

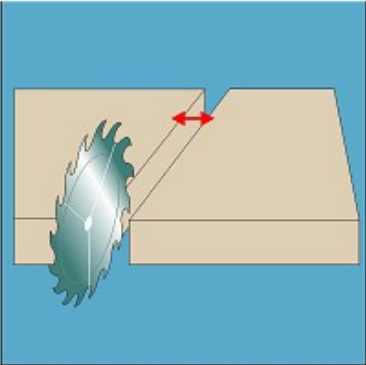
Front 10.0 Rear 10.0

Minimum crosscut trim (inc saw blade thickness)

Front 10.0 Rear 10.0

Retrim after head cut (inc saw blade thickness) 5.0

Saw blade thickness: Rip and crosscut



OK Print Help Cancel

- Adjust the required values

Any changes (at the cutting list) only apply to the cutting list chosen

4. More about Cutting lists

There are several options for searching, sorting and for changing the view of the cutting list.

Parts										
	Description	Material	Length	Width	Quantity	Grain	Edge	Info 1	Info 2	Info 3
Global		MAPLEWOOD-18MM								
1.	PRT-001-A	MAPLEWOOD-18MM	1200.0	725.0	8	N	0000			
2.	PRT-002-B	MAPLEWOOD-18MM	1250.0	600.0	2	N	0000			
3.	PRT-003-C	MAPLEWOOD-18MM	790.0	450.0	3	N	0000			
4.	PRT-004-D	MAPLEWOOD-18MM	580.0	200.0	8	N	0000			
5.		MAPLEWOOD-18MM								

Boards									
	Board	Material	Length	Width	Thickness	Information	Quantity	Cost	Grain
Global									
1.	MAPLEWOOD-18MM/01	MAPLEWOOD-18MM	2550.0	1525.0	18.0		42	2.340	Y
2.									

These options can be useful when dealing with larger lists or where not all the fields (columns) are required.

Find

To locate an item in the list (for example, a part description or material code).

- Click on a cell in a column
- Select: **Edit - Find (Ctrl F)**

The program displays the Find dialog.

Find

Find what: MAPLEWOOD-18MM Find Next

☐ Match whole cell only ☐ Match case

Direction
☐ Up
☒ Down

Search Current column

- Enter text to search for
- Select the [**Find Next**] button

The program moves to any found items.

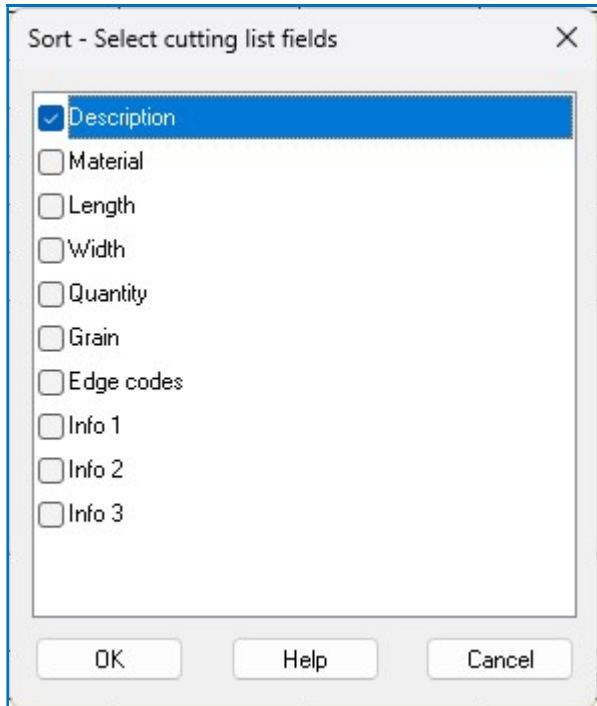
The search is only for the current column and only applies to the list the cursor is located in; Parts and Boards are searched separately.

Sort

The list can be sorted by material, or by length, or by a combination of these. At the Cutting list screen:-

- Move to the 'Parts' section
- Select: **Edit - Sort**

The program displays a dialog to select the part fields to sort by.



- Check a box to select a field

The sort can be based on more than one field.

- Select **OK** to confirm

Note - A sort can also be applied to the Boards section (move to the Boards section and select: *Edit - Sort*).

Save and Copy lists

In some cases it is useful to save an existing list and use this as the basis for a new list. For example, where many of the part details are the same but the quantities are different. There are two ways of doing this.

Save As

- Select: **File - Save As**

The program prompts for the name of the new list.

Take care when using this method because if the existing list is already optimised opening a list gives the warning message:-

Patterns exist - changing list deletes patterns

It is Ok to open the list but make sure no changes are made.

Merge lists

- Create a NEW cutting list:-
- Move to the first line

- Select: **Edit - Merge**

The program prompts for the name of the cutting list to merge in.

	File	Title	Quantity
1	Demo multiple boards	Example of multiple boards	1
2			
3			
4			
5			
6			
7			

Buttons: OK, List, Delete, Print, Help, Cancel

- Enter the list name (or use the **List** button to select available lists)
- Enter the quantity of the list to merge in.

The merge applies to the Parts section and Boards section separately. Move to the Boards section to merge in Boards (*Edit - Merge*).

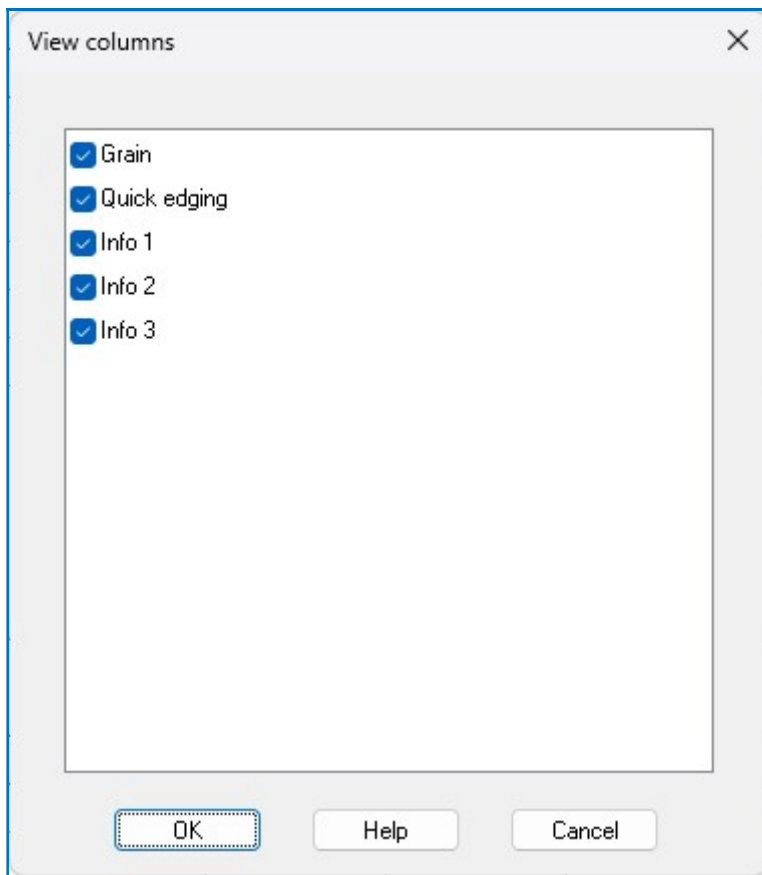
Note - Merge can also be used to add one list to another.

View menu

Use the View menu to alter the style and appearance of the cutting list

For example, to hide columns:-

- Select: **View - Columns**



- Un-check a column to hide it.

In the example below 'Grain' and 'Quick edging' columns are hidden.

Cutting list - Demo cutting list									
File Edit View Optimise Help									
Title: Example of basic cutting list Parameters									
Parts									
	Description	Material	Length	Width	Quantity	Info 1	Info 2	Info 3	
Global		MAPLEWOOD-18MM							
1.	PRT-001-A	MAPLEWOOD-18MM	1200.0	725.0	8				
2.	PRT-002-B	MAPLEWOOD-18MM	1250.0	600.0	2				
3.	PRT-003-C	MAPLEWOOD-18MM	790.0	450.0	3				
4.	PRT-004-D	MAPLEWOOD-18MM	580.0	200.0	8				
5.		MAPLEWOOD-18MM							
Boards									
	Board	Material	Length	Width	Thickness	Information	Quantity	Cost	Grain
Global									
1.	MAPLEWOOD-18MM/01	MAPLEWOOD-18MM	2550.0	1525.0	18.0		42	2.340	Y
2.									
NUM									

Edit Parts and Boards

The Cutting list operates like a spreadsheet. Use the standard 'Windows' options to cut and paste data. These options are on the Edit menu.

Edit - Cut (Ctrl X)
 Edit - Copy (Ctrl C)
 Edit - Paste (Ctrl V)

Edit - Undo (Ctrl Z)

Edit - Clear (Del)

Edit - Insert line (F6)

Edit - Delete line (F7)

Cells, rows or blocks of data can be copied. When copying more than one cell make sure that the selected block and the area to copy to match exactly in terms on the number of columns and rows.

It is also possible to copy data from an external spreadsheet. In this case the columns in the spreadsheet must match the columns as set in the Cutting list. For example:-

	A	B	C	D	E	F	G
1	PRT-001-A	MAPLEWOOD-18MM	1200	725	8	N	
2	PRT-002-B	MAPLEWOOD-18MM	1250	600	2	N	
3	PRT-003-C	MAPLEWOOD-18MM	790	450	3	N	
4	PRT-004-D	MAPLEWOOD-18MM	580	200	8	N	
5							
6							

The data can be pasted into a new or an existing cutting list.

Part list										
File Edit View Optimise Help										
Title <input type="text"/> Parameters										
Parts										
	Description	Material	Length	Width	Quantity	Grain	Edge	Info 1	Info 2	Info 3
Global										
1.	PRT-001-A	MAPLEWOOD-18MM	1200.0	725.0	8	N				
2.	PRT-002-B	MAPLEWOOD-18MM	1250.0	600.0	2	N				
3.	PRT-003-C	MAPLEWOOD-18MM	790.0	450.0	3	N				
4.	PRT-004-D	MAPLEWOOD-18MM	580.0	200.0	8	N				
5.										
6.										
7.										
8.										
9.										
10.										
Boards										
	Board	Material	Length	Width	Thickness	Information	Quantity	Cost	Grain	
Global										
1.	MAPLEWOOD-18MM/01	MAPLEWOOD-18MM	2550.0	1525.0	18.0		42	2.340	Y	
2.										
										NUM

Note - if copying from the program to a spreadsheet any hidden columns are automatically included in the copy - allow for this in the spreadsheet format.

Global line

The Global line is the line at the top of the list of Parts and list of Boards.

Part list										
File Edit View Optimise Help										
Title <input type="text"/> Parameters										
Parts										
	Description	Material	Length	Width	Quantity	Grain	Edge	Info 1	Info 2	Info 3
Global		MAPLEWOOD-18MM								
1.	PRT-001-A	MAPLEWOOD-18MM	1200.0	725.0	8	N				
2.	PRT-002-B	MAPLEWOOD-18MM	1250.0	600.0	2	N				
3.	PRT-003-C	MAPLEWOOD-18MM	790.0	450.0	3	N				
4.	PRT-004-D	MAPLEWOOD-18MM	580.0	200.0	8	N				
5.		MAPLEWOOD-18MM								
6.		MAPLEWOOD-18MM								
7.		MAPLEWOOD-18MM								
8.		MAPLEWOOD-18MM								
Boards										
	Board	Material	Length	Width	Thickness	Information	Quantity	Cost	Grain	
Global										
1.	MAPLEWOOD-18MM/01	MAPLEWOOD-18MM	2550.0	1525.0	18.0		42	2.340	Y	
2.										
3.										
										NUM

If there is an entry in this line the entry applies to every item in the list. This saves typing effort where the value is the same for every part, for example, if all parts are the same material. The lines below the global line are greyed out and cannot be changed.

To remove a global entry; delete the entry at the global line and move off the cell.

Print - Cutting list

To print the current list:-

- Select: **File - Print (Ctrl P)**

or



Select the ToolBar option

The program prompts to choose the data to print.

Print		X	
<input checked="" type="checkbox"/>	Parts		
<input checked="" type="checkbox"/>	Boards		
<input type="checkbox"/>	Print grid lines		
OK		Help Cancel	

- Check the options to print parts, boards or both.

The following example shows a print including Parts and Boards.

Express Data			Maji-Cut V12 Express				Friday 14 July 2023 14:17			
Cutting list										
Ref										
No	Description	Material	Length	Width	Quantity	Grain	Edge	Info 1	Info 2	Info 3
		MAPLEWOOD-18MM								
1.	PRT-001-A		1200.0	725.0	8	N	0000			
2.	PRT-002-B		1250.0	600.0	2	N	0000			
3.	PRT-003-C		790.0	460.0	3	N	0000			
4.	PRT-004-D		580.0	200.0	8	N	0000			
Board list										
No	Board	Material	Length	Width	Thickness	Information	Quantity	Cost	Grain	
1.	MAPLEWOOD-18MM/01	MAPLEWOOD-18MM	2550.0	1525.0	18.0		42	2.340	Y	

The other Print options are:-

- **File - Print preview** (view the printout on-screen before printing)
- **File - Print setup** (change paper size, orientation, etc.)

Using Board list with Merge

Where there is a fairly standard and limited set of board sizes it can be useful to set up a full list of boards in a cutting list and use Merge (at the Board list) to copy the list of boards into other cutting lists as required.

To do this:-

- Select any cutting list
- Select: **Save As**
- Enter a name for the new list

(for example, 'Standard')

- Enter the standard board sizes

At any cutting list (boards section) where some or all of the standard boards are required select 'Merge' to merge in the 'Standard' list. Adjust the quantities or boards available as required.

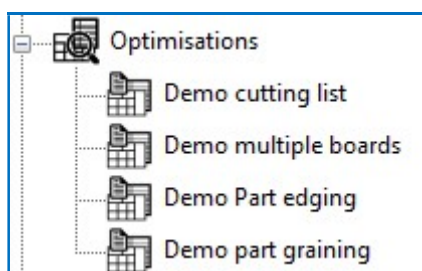
It does not matter if the standard list contains boards with materials that are not in the parts section - these boards are ignored.

5. More about Review runs

The 'Review runs' options are used for looking at the cutting patterns (optimising results). They show a set of summaries, the full set of patterns and cutting instructions.

To look at any optimised run, at the main screen:-

- Open the 'Optimisations' branch of the tree



- Double click on a run to view it.

The first report shown is the Management Summary

Management summary Example of part edging

Demo Part edging
Revision 6 : 14 Jul 2023 14:23 : Optimised by Stephanie

Description	Quantity	m2	m3	Percent	Cost	Statistic	Value
Parts produced	139	24.73	0.43	83.07%		Number of patterns	8
Scrap		5.04	0.08	16.93%		Headcut patterns	1
Sheets used	10	29.77	0.51	100.00%	92.76	Rotated patterns	0
						Recut patterns	5
Edge K	8.3M					Waste (%Parts)	20.38%
Edge R	16.9M					Waste (%Boards)	16.93%
Edge T	109.8M						
Edge W	32.5M						

Navigation: < > Management summary /

Use the navigation options and/or the stacked toolbar at the left to see the other reports and patterns.

Customising reports

Each report can be customised. The items that can be changed are:-

- Report content
- Report format (font style and size)
- Report layout (column widths, grid lines etc.)

To customise the 'On-screen' report:-

- Move to a report (e.g. Part summary)

Review runs

File Edit View Settings Summaries Help

Part summary

Example of part edging

Management summary

Part summary

Board summary

Pattern summary

Input summary

Material summary

Pattern preview

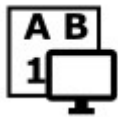
Pattern

Revision 6 : 14 Jul 2023 14:23 : Optimised by Stephanie

No	Part / Description	Length mm	Width mm	Total Prod	m2 / Part	Total m2	Material cost /Part	Material cost Total
Total				139		24.73		92.76
1.	BTH-CAB-BACK	664.0	564.0	11	0.374	4.12	1.30	14.27
2.	BTH-CAB-BOTTOM	664.0	144.0	9	0.096	0.86	0.33	2.98
3.	BTH-CAB-DOOR-LEFT	349.5	450.0	12	0.157	1.89	0.54	6.54
4.	BTH-CAB-DOOR-RIGHT	349.5	450.0	12	0.157	1.89	0.54	6.54
5.	BTH-CAB-END-LEFT	162.0	600.0	9	0.097	0.87	0.34	3.03
6.	BTH-CAB-END-RIGHT	162.0	600.0	9	0.097	0.87	0.34	3.03
7.	BTH-CAB-SHELF	664.0	144.0	8	0.096	0.76	0.33	2.65
8.	BTH-CAB-SHLF-BASE	664.0	162.0	7	0.108	0.75	0.37	2.61
9.	BTH-CAB-TOP	664.0	162.0	8	0.108	0.86	0.37	2.98
10.	DDC-SHELF	928.0	311.0	9	0.289	2.60	1.09	9.80
11.	DDC-SHELF	928.0	311.0	12	0.289	3.46	1.09	13.06
12.	DDC-SIDE-LEFT	564.0	311.0	11	0.175	1.93	0.61	6.68
15.	DDC-SIDE-RIGHT	564.0	311.0	7	0.175	1.23	0.61	4.25
13.	GABLE-END-LEFT	564.0	311.0	9	0.175	1.58	0.96	8.61
14.	GABLE-END-RIGHT	564.0	311.0	6	0.175	1.05	0.96	5.74

Part summary

- Select: **Settings - Report settings**
- or



Select the Toolbar symbol

The Report layout dialog is shown.

Report settings - Part summary

Layout Font

Content

Available		Chosen
Length Inches	>>	No
Length Frac		Part / Description
Width Inches	<<	Length mm
Width Frac		Width mm
Total Req		Total Prod
ft2 / Part		m2 / Part
Total ft2		Total m2
Line		Material cost /Part
Material		Material cost Total
Thickness mm		Grain
		Edge

Column widths

Use default ☐

Format Auto-fit to contents

Sort by

☐ Material (with subheadings and subtotals) - Default

☐ Line / item number

☒ Custom ...

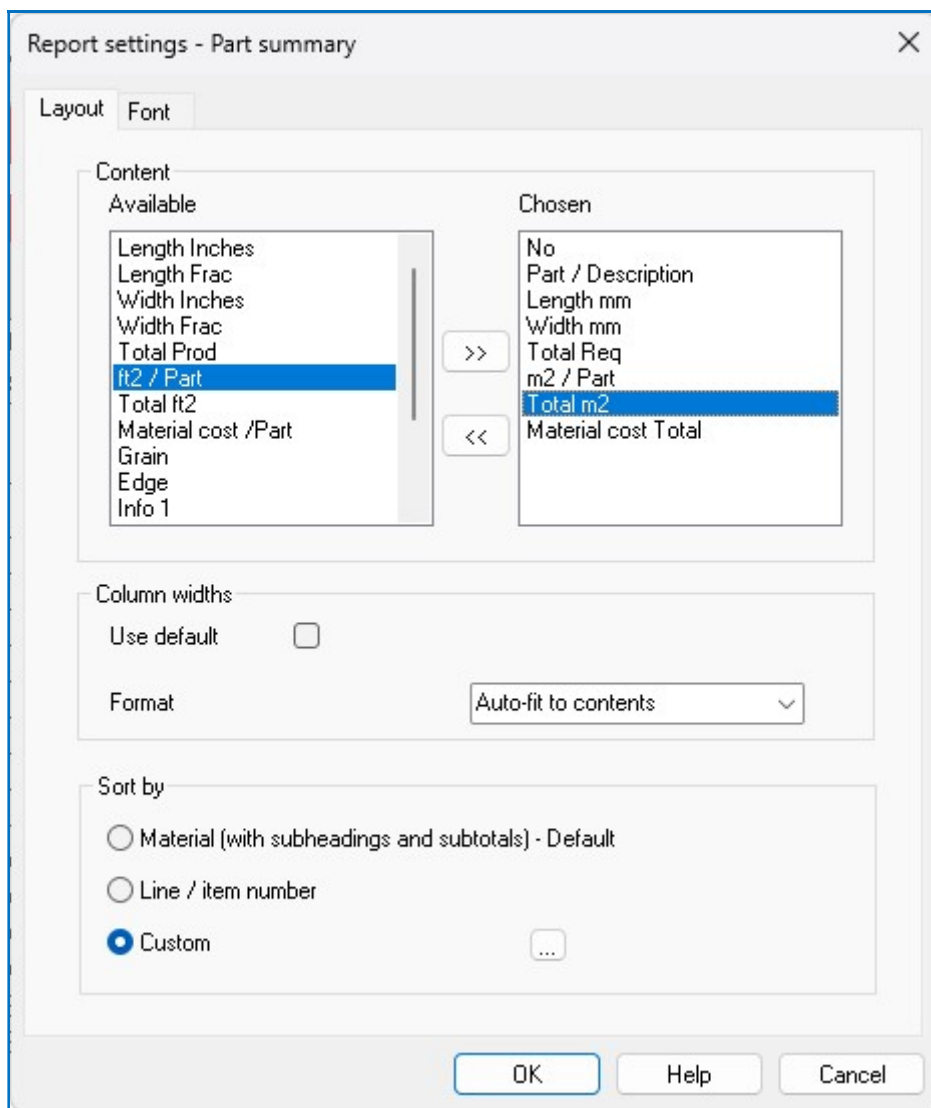
OK Help Cancel

Content

These boxes show the available fields on the left and the fields already chosen for the report on the right.

- Select an item and use the arrow buttons to move the item to and from the report.

In the following example some fields are removed from the report.



The report now looks like this:-

Review runs

File Edit View Settings Summaries Help

Part summary Example of part edging

Revision 6 : 14 Jul 2023 14:23 : Optimised by Stephanie

Demo Part edging

No	Part / Description	Length mm	Width mm	Total Req	m2 / Part	Total m2	Material cost Total
Total				139		24.73	92.76
1.	BTH-CAB-BACK	664.0	564.0	11	0.374	4.12	14.27
2.	BTH-CAB-BOTTOM	664.0	144.0	9	0.096	0.86	2.98
3.	BTH-CAB-DOOR-LEFT	349.5	450.0	12	0.157	1.89	6.54
4.	BTH-CAB-DOOR-RIGHT	349.5	450.0	12	0.157	1.89	6.54
5.	BTH-CAB-END-LEFT	162.0	600.0	9	0.097	0.87	3.03
6.	BTH-CAB-END-RIGHT	162.0	600.0	9	0.097	0.87	3.03
7.	BTH-CAB-SHELF	664.0	144.0	8	0.096	0.76	2.65
8.	BTH-CAB-SHLF-BASE	664.0	162.0	7	0.108	0.75	2.61
9.	BTH-CAB-TOP	664.0	162.0	8	0.108	0.86	2.98
10.	DDC-SHELF	928.0	311.0	9	0.289	2.60	9.80
11.	DDC-SHELF	928.0	311.0	12	0.289	3.46	13.06
12.	DDC-SIDE-LEFT	564.0	311.0	11	0.175	1.93	6.68
15.	DDC-SIDE-RIGHT	564.0	311.0	7	0.175	1.23	4.25
13.	GABLE-END-LEFT	564.0	311.0	9	0.175	1.58	8.61
14.	GABLE-END-RIGHT	564.0	311.0	8	0.175	1.05	5.74

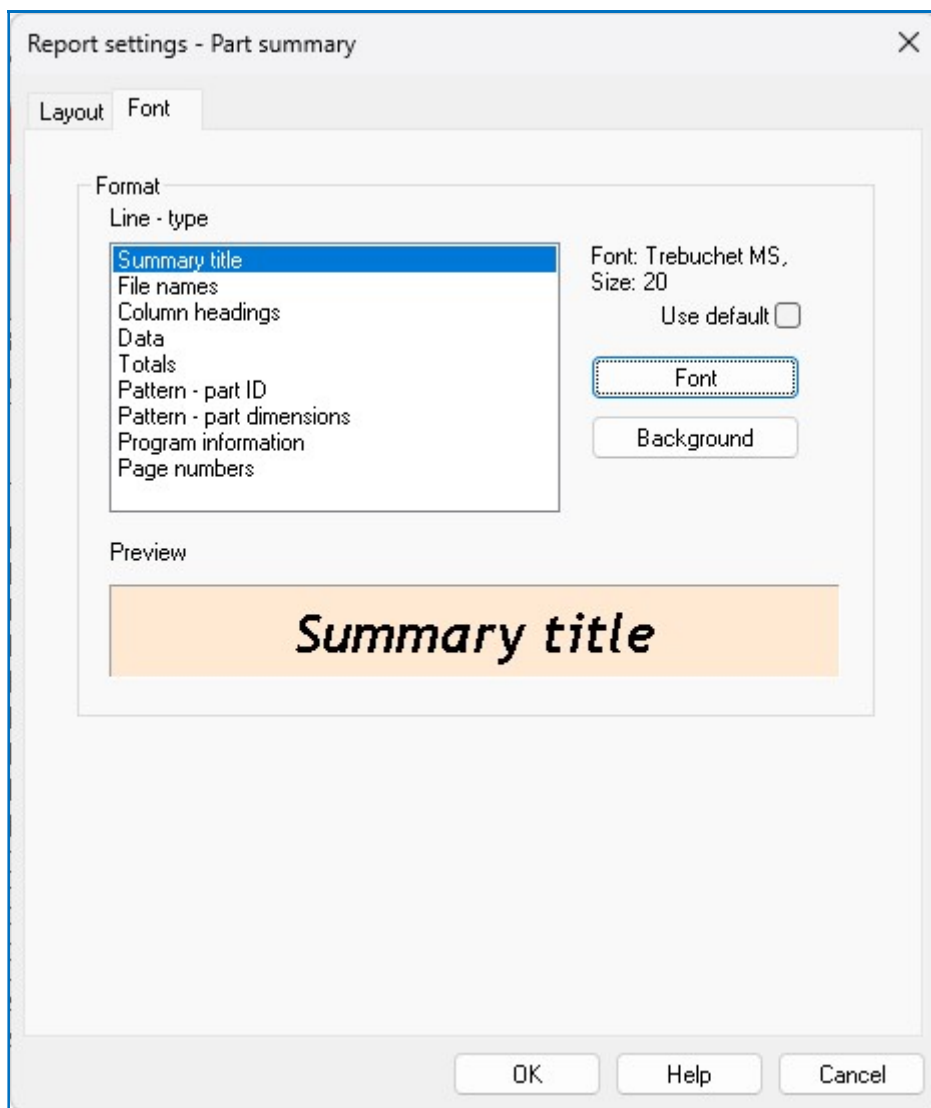
Part summary

Line type

This box shows the different sorts of information on the report, for example, Report header, column headings, data. The style of each of these can be changed.

- Click on Line type
- Click off the check box (Use default)
- Select the Font and Background buttons to change the font and background

In the example below the 'Summary title' font and background are changed.



The report is now as follows:-

Review runs

File Edit View Settings Summaries Help

Part summary

Example of part edging

Revision 6 : 14 Jul 2023 14:23 : Optimised by Stephanie

Demo Part edging

No	Part / Description	Length mm	Width mm	Total Req	m2 / Part	Total m2	Material cost Total
Total				139		24.73	92.76
1.	BTH-CAB-BACK	664.0	564.0	11	0.374	4.12	14.27
2.	BTH-CAB-BOTTOM	664.0	144.0	9	0.096	0.86	2.98
3.	BTH-CAB-DOOR-LEFT	349.5	450.0	12	0.157	1.89	6.54
4.	BTH-CAB-DOOR-RIGHT	349.5	450.0	12	0.157	1.89	6.54
5.	BTH-CAB-END-LEFT	162.0	600.0	9	0.097	0.87	3.03
6.	BTH-CAB-END-RIGHT	162.0	600.0	9	0.097	0.87	3.03
7.	BTH-CAB-SHELF	664.0	144.0	8	0.096	0.76	2.65
8.	BTH-CAB-SHLF-BASE	664.0	162.0	7	0.108	0.75	2.61
9.	BTH-CAB-TOP	664.0	162.0	8	0.108	0.86	2.98
10.	DDC-SHELF	928.0	311.0	9	0.289	2.60	9.80
11.	DDC-SHELF	928.0	311.0	12	0.289	3.46	13.06
12.	DDC-SIDE-LEFT	564.0	311.0	11	0.175	1.93	6.68
15.	DDC-SIDE-RIGHT	564.0	311.0	7	0.175	1.23	4.25
13.	GABLE-END-LEFT	564.0	311.0	9	0.175	1.58	8.61
14.	GABLE-END-RIGHT	564.0	311.0	6	0.175	1.05	5.74

Part summary

Column widths

To change the column widths:-

- Click off the 'Use default' box
- Select the type of column width

User defined
Auto fit to contents
Auto fit to display

In this example the column width is set to 'User defined'.

Whilst the grid widths can be changed at this dialog it is often easier to do this at the Report screen via the options on the 'View' menu.

Using the View menu to customise reports

There are several options at the 'View' menu to help customise the report. For example:-

To manually change the column widths.

- Turn on the Grid labels (these act as grab handles for the columns).

Review runs

File Edit View Settings Summaries Help

Summaries Zoom

Management summary

Part summary

Board summary

Pattern summary

Input summary

Material summary

Pattern preview

Pattern

Part summary

Example of part edging

Demo Part edging
Revision 6 : 14 Jul 2023 14:23 : Optimised by Stephanie

No	Part / Description	Length mm	Width mm	Total Req	m2 / Part	Total m2	Material cost Total
Total				139		24.73	92.76
1.	BTH-CAB-BACK	664.0	564.0	11	0.374	4.12	14.27
2.	BTH-CAB-BOTTOM	664.0	144.0	9	0.096	0.86	2.98
3.	BTH-CAB-DOOR-LEFT	349.5	450.0	12	0.157	1.89	6.54
4.	BTH-CAB-DOOR-RIGHT	349.5	450.0	12	0.157	1.89	6.54
5.	BTH-CAB-END-LEFT	162.0	600.0	9	0.097	0.87	3.03
6.	BTH-CAB-END-RIGHT	162.0	600.0	9	0.097	0.87	3.03
7.	BTH-CAB-SHELF	664.0	144.0	8	0.096	0.76	2.65
8.	BTH-CAB-SHLF-BASE	664.0	162.0	7	0.108	0.75	2.61
9.	BTH-CAB-TOP	664.0	162.0	8	0.108	0.86	2.98
10.	DDC-SHELF	928.0	311.0	9	0.289	2.60	9.80
11.	DDC-SHELF	928.0	311.0	12	0.289	3.46	13.06
12.	DDC-SIDE-LEFT	564.0	311.0	11	0.175	1.93	6.68
15.	DDC-SIDE-RIGHT	564.0	311.0	7	0.175	1.23	4.25
13.	GABLE-END-LEFT	564.0	311.0	9	0.175	1.58	8.61
14.	GABLE-END-RIGHT	564.0	311.0	6	0.175	1.05	5.74

Part summary

- Move the mouse over the junction of a grid label to alter the column width
- Hold down the mouse button to drag the column to change the width

In the following example the column widths have been altered.

Review runs																																																																																																																																																																										
File Edit View Settings Summaries Help																																																																																																																																																																										
Summaries																																																																																																																																																																										
<div> <div> </div> <div>Management summary</div> </div> <div> <div> </div> <div>Part summary</div> </div> <div> <div> </div> <div>Board summary</div> </div> <div> <div> </div> <div>Pattern summary</div> </div> <div> <div> </div> <div>Input summary</div> </div> <div> <div> </div> <div>Material summary</div> </div> <div> <div> </div> <div>Pattern preview</div> </div> <div> <div> </div> <div>Pattern</div> </div>																																																																																																																																																																										
<div> <div>Part summary</div> <div>Example of part edging</div> </div>																																																																																																																																																																										
Revision 6 : 14 Jul 2023 14:23 : Optimised by Stephanie																																																																																																																																																																										
<table> <tr> <td></td><td>1</td><td>2</td><td></td><td></td><td></td><td></td><td></td><td></td></tr> <tr> <td>No</td><td>Part / Description</td><td>Length mm</td><td>Width mm</td><td>Total Req</td><td>m2 / Part</td><td>Total m2</td><td>Material cost Total</td><td></td></tr> <tr> <td>Total</td><td></td><td></td><td></td><td>139</td><td></td><td>24.73</td><td>92.76</td><td></td></tr> <tr> <td>1.</td><td>BTH-CAB-BACK</td><td>664.0</td><td>564.0</td><td>11</td><td>0.374</td><td>4.12</td><td>14.27</td><td></td></tr> <tr> <td>2.</td><td>BTH-CAB-BOTTOM</td><td>664.0</td><td>144.0</td><td>9</td><td>0.096</td><td>0.86</td><td>2.98</td><td></td></tr> <tr> <td>3.</td><td>BTH-CAB-DOOR-LEFT</td><td>349.5</td><td>450.0</td><td>12</td><td>0.157</td><td>1.89</td><td>6.54</td><td></td></tr> <tr> <td>4.</td><td>BTH-CAB-DOOR-RIGHT</td><td>349.5</td><td>450.0</td><td>12</td><td>0.157</td><td>1.89</td><td>6.54</td><td></td></tr> <tr> <td>5.</td><td>BTH-CAB-END-LEFT</td><td>162.0</td><td>600.0</td><td>9</td><td>0.097</td><td>0.87</td><td>3.03</td><td></td></tr> <tr> <td>6.</td><td>BTH-CAB-END-RIGHT</td><td>162.0</td><td>600.0</td><td>9</td><td>0.097</td><td>0.87</td><td>3.03</td><td></td></tr> <tr> <td>7.</td><td>BTH-CAB-SHELF</td><td>664.0</td><td>144.0</td><td>8</td><td>0.096</td><td>0.76</td><td>2.65</td><td></td></tr> <tr> <td>8.</td><td>BTH-CAB-SHLF-BASE</td><td>664.0</td><td>162.0</td><td>7</td><td>0.108</td><td>0.75</td><td>2.61</td><td></td></tr> <tr> <td>9.</td><td>BTH-CAB-TOP</td><td>664.0</td><td>162.0</td><td>8</td><td>0.108</td><td>0.86</td><td>2.98</td><td></td></tr> <tr> <td>10.</td><td>DDC-SHELF</td><td>928.0</td><td>311.0</td><td>9</td><td>0.289</td><td>2.60</td><td>9.80</td><td></td></tr> <tr> <td>11.</td><td>DDC-SHELF</td><td>928.0</td><td>311.0</td><td>12</td><td>0.289</td><td>3.46</td><td>13.06</td><td></td></tr> <tr> <td>12.</td><td>DDC-SIDE-LEFT</td><td>564.0</td><td>311.0</td><td>11</td><td>0.175</td><td>1.93</td><td>6.88</td><td></td></tr> <tr> <td>15.</td><td>DDC-SIDE-RIGHT</td><td>564.0</td><td>311.0</td><td>7</td><td>0.175</td><td>1.23</td><td>4.25</td><td></td></tr> <tr> <td>13.</td><td>GABLE-END-LEFT</td><td>564.0</td><td>311.0</td><td>9</td><td>0.175</td><td>1.58</td><td>8.61</td><td></td></tr> <tr> <td>14.</td><td>GABLE-END-RIGHT</td><td>564.0</td><td>311.0</td><td>6</td><td>0.175</td><td>1.05</td><td>5.74</td><td></td></tr> </table>										1	2							No	Part / Description	Length mm	Width mm	Total Req	m2 / Part	Total m2	Material cost Total		Total				139		24.73	92.76		1.	BTH-CAB-BACK	664.0	564.0	11	0.374	4.12	14.27		2.	BTH-CAB-BOTTOM	664.0	144.0	9	0.096	0.86	2.98		3.	BTH-CAB-DOOR-LEFT	349.5	450.0	12	0.157	1.89	6.54		4.	BTH-CAB-DOOR-RIGHT	349.5	450.0	12	0.157	1.89	6.54		5.	BTH-CAB-END-LEFT	162.0	600.0	9	0.097	0.87	3.03		6.	BTH-CAB-END-RIGHT	162.0	600.0	9	0.097	0.87	3.03		7.	BTH-CAB-SHELF	664.0	144.0	8	0.096	0.76	2.65		8.	BTH-CAB-SHLF-BASE	664.0	162.0	7	0.108	0.75	2.61		9.	BTH-CAB-TOP	664.0	162.0	8	0.108	0.86	2.98		10.	DDC-SHELF	928.0	311.0	9	0.289	2.60	9.80		11.	DDC-SHELF	928.0	311.0	12	0.289	3.46	13.06		12.	DDC-SIDE-LEFT	564.0	311.0	11	0.175	1.93	6.88		15.	DDC-SIDE-RIGHT	564.0	311.0	7	0.175	1.23	4.25		13.	GABLE-END-LEFT	564.0	311.0	9	0.175	1.58	8.61		14.	GABLE-END-RIGHT	564.0	311.0	6	0.175	1.05	5.74	
	1	2																																																																																																																																																																								
No	Part / Description	Length mm	Width mm	Total Req	m2 / Part	Total m2	Material cost Total																																																																																																																																																																			
Total				139		24.73	92.76																																																																																																																																																																			
1.	BTH-CAB-BACK	664.0	564.0	11	0.374	4.12	14.27																																																																																																																																																																			
2.	BTH-CAB-BOTTOM	664.0	144.0	9	0.096	0.86	2.98																																																																																																																																																																			
3.	BTH-CAB-DOOR-LEFT	349.5	450.0	12	0.157	1.89	6.54																																																																																																																																																																			
4.	BTH-CAB-DOOR-RIGHT	349.5	450.0	12	0.157	1.89	6.54																																																																																																																																																																			
5.	BTH-CAB-END-LEFT	162.0	600.0	9	0.097	0.87	3.03																																																																																																																																																																			
6.	BTH-CAB-END-RIGHT	162.0	600.0	9	0.097	0.87	3.03																																																																																																																																																																			
7.	BTH-CAB-SHELF	664.0	144.0	8	0.096	0.76	2.65																																																																																																																																																																			
8.	BTH-CAB-SHLF-BASE	664.0	162.0	7	0.108	0.75	2.61																																																																																																																																																																			
9.	BTH-CAB-TOP	664.0	162.0	8	0.108	0.86	2.98																																																																																																																																																																			
10.	DDC-SHELF	928.0	311.0	9	0.289	2.60	9.80																																																																																																																																																																			
11.	DDC-SHELF	928.0	311.0	12	0.289	3.46	13.06																																																																																																																																																																			
12.	DDC-SIDE-LEFT	564.0	311.0	11	0.175	1.93	6.88																																																																																																																																																																			
15.	DDC-SIDE-RIGHT	564.0	311.0	7	0.175	1.23	4.25																																																																																																																																																																			
13.	GABLE-END-LEFT	564.0	311.0	9	0.175	1.58	8.61																																																																																																																																																																			
14.	GABLE-END-RIGHT	564.0	311.0	6	0.175	1.05	5.74																																																																																																																																																																			
<div> <div>Part summary</div> </div>																																																																																																																																																																										

The view menu can also be used to add grid lines.

- Select: **View - Grid lines**

Review runs

File Edit View Settings Summaries Help

Part summary

Example of part edging

Management summary

Part summary

Board summary

Pattern summary

Input summary

Material summary

Pattern preview

Pattern

Revision 6 : 14 Jul 2023 14:23 : Optimised by Stephanie

No	Part / Description	Length mm	Width mm	Total Req	m2 / Part	Total m2	Material cost Total
Total				139		24.73	92.76
1.	BTH-CAB-BACK	664.0	584.0	11	0.374	4.12	14.27
2.	BTH-CAB-BOTTOM	664.0	144.0	9	0.096	0.86	2.98
3.	BTH-CAB-DOOR-LEFT	349.5	450.0	12	0.157	1.89	6.54
4.	BTH-CAB-DOOR-RIGHT	349.5	450.0	12	0.157	1.89	6.54
5.	BTH-CAB-END-LEFT	162.0	600.0	9	0.097	0.87	3.03
6.	BTH-CAB-END-RIGHT	162.0	600.0	9	0.097	0.87	3.03
7.	BTH-CAB-SHELF	664.0	144.0	8	0.096	0.76	2.65
8.	BTH-CAB-SHLF-BASE	664.0	162.0	7	0.108	0.75	2.61
9.	BTH-CAB-TOP	664.0	162.0	8	0.108	0.86	2.98
10.	DDC-SHELF	928.0	311.0	9	0.289	2.60	9.80
11.	DDC-SHELF	928.0	311.0	12	0.289	3.46	13.06
12.	DDC-SIDE-LEFT	564.0	311.0	11	0.175	1.93	6.68
15.	DDC-SIDE-RIGHT	564.0	311.0	7	0.175	1.23	4.25
13.	GABLE-END-LEFT	564.0	311.0	9	0.175	1.58	8.61
14.	GABLE-END-RIGHT	564.0	311.0	6	0.175	1.05	5.74

Part summary /

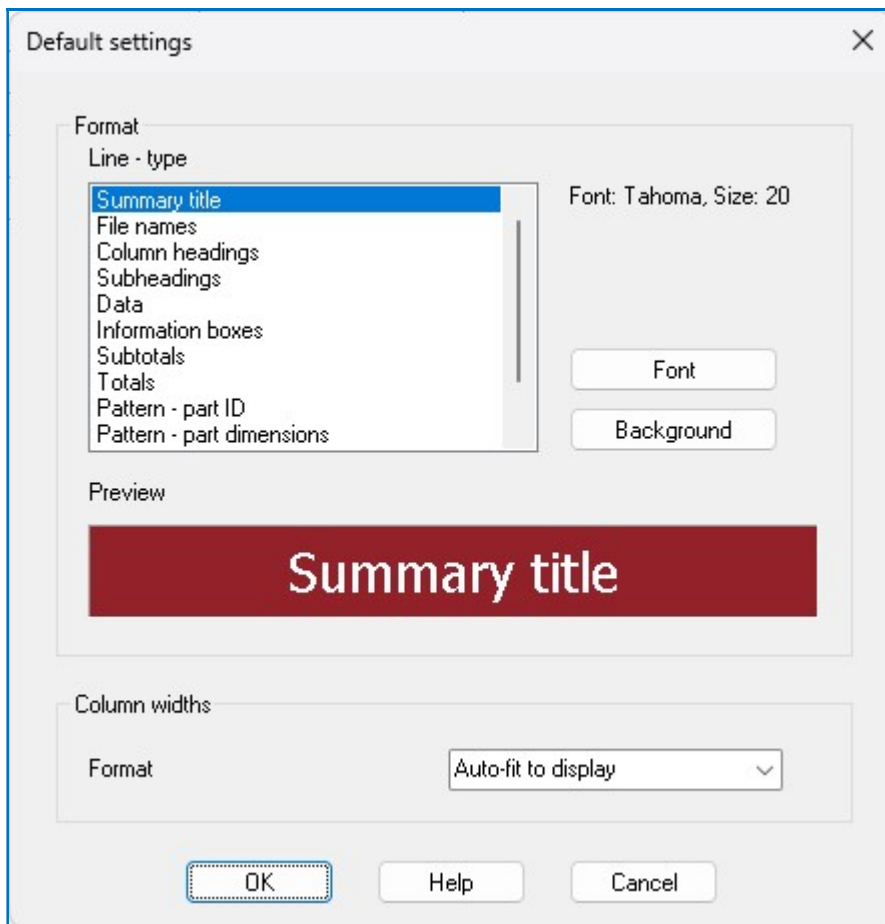
Default report settings

On the report settings dialog there is a box labelled 'Use default'. If this is checked the default settings for a report are used. These defaults apply to ALL the reports where this box is checked.

To change the default settings themselves, at any report:-

- Select: **Settings - Default settings**

The default settings are shown.



Note - The content of each report is also set as a default - this default is set by the program and cannot be changed.

Printing reports

To print a report (or pattern).

- Move to the report/pattern

- Select: **File - Print (Ctrl P)**

or



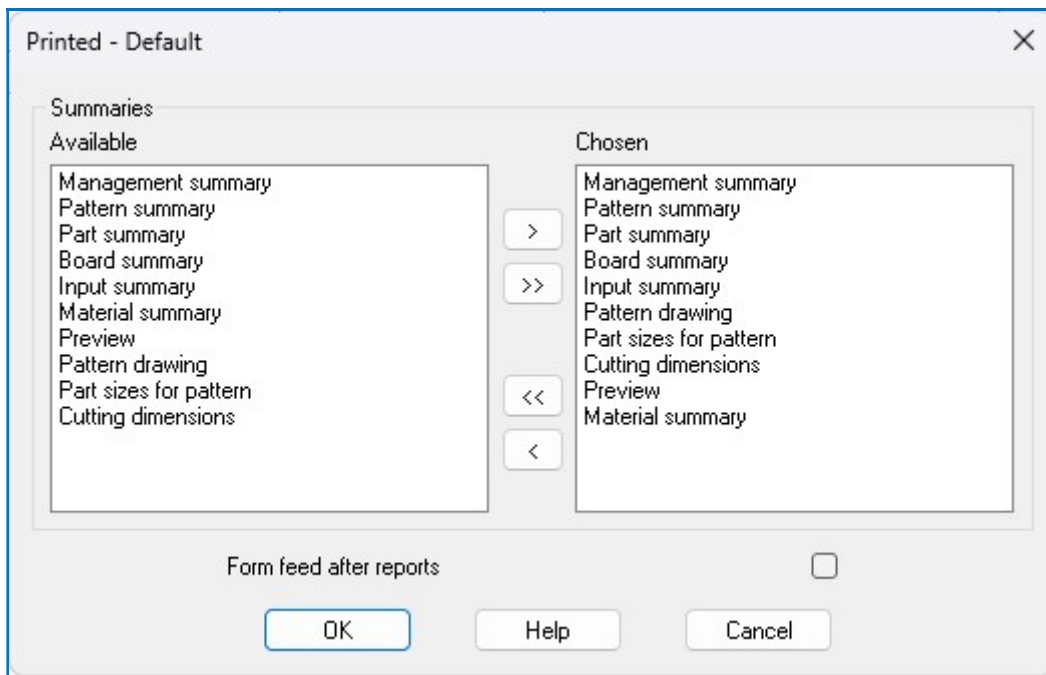
Select the ToolBar option

This prints the current report.

To print all the reports and/or patterns.

- Select: **File - Print summaries**

The program prompts with a dialog to select the items to print.



- Use the arrow buttons to move the reports from 'Available' to 'Chosen'.

The program retains the choices for future sessions.

(The default reports to print are set at the 'Review runs Parameters' dialog).

There are options on the File menu to alter the Page Setup and Printer Setup.

- **File - Page setup**
- **File - Default Page setup**

The page setup can apply separately to each report.

- Move to the report
- Select: **File - Page setup**

Page setup - Management summary

Paper

Size: A4

From:

Orientation

☐ Portrait

☒ Landscape

Margins (Millimetres)

Left: 5 Right: 5

Top: 5 Bottom: 5

Options

☐ Black and white

☒ Print to fit

☐ Print grid lines

Header/footer

Banner: All pages

Page numbers: Centred

Printer

Microsoft Print to PDF

Printer...

☒ Use default

OK Help Cancel

These options control the paper size, orientation and basic report items such as the banner and page numbers.

- Check the 'Use default' settings to apply the default settings. The default settings apply to all reports where 'Use default' is checked.

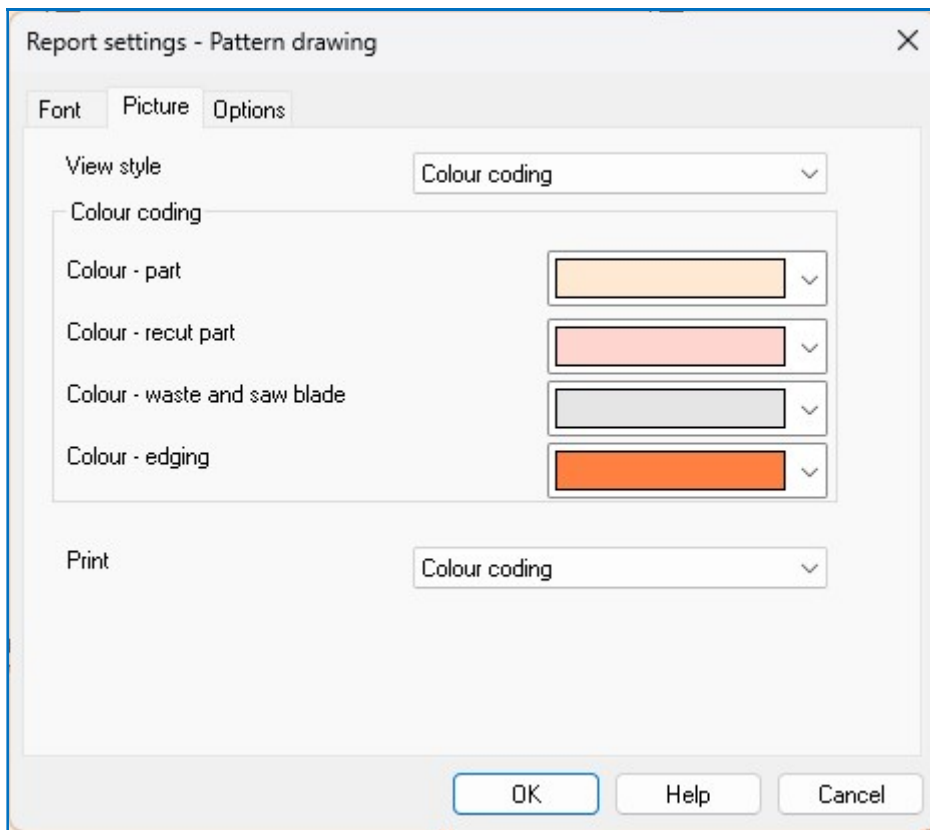
The default settings can be changed via the option: **File - Default page setup**. Any changes to the default settings apply to all reports using the default settings.

File - Print setup - This is not often needed since the printer can be changed at the standard Print dialog which always pops up before printing reports and the page layout is best set at the 'Page setup' or 'Default page setup' dialogs.

Review runs parameters

The operation of Review runs can be customised via 'Review runs parameters'. At the Review runs screen:-

- Select: **File - Parameters**

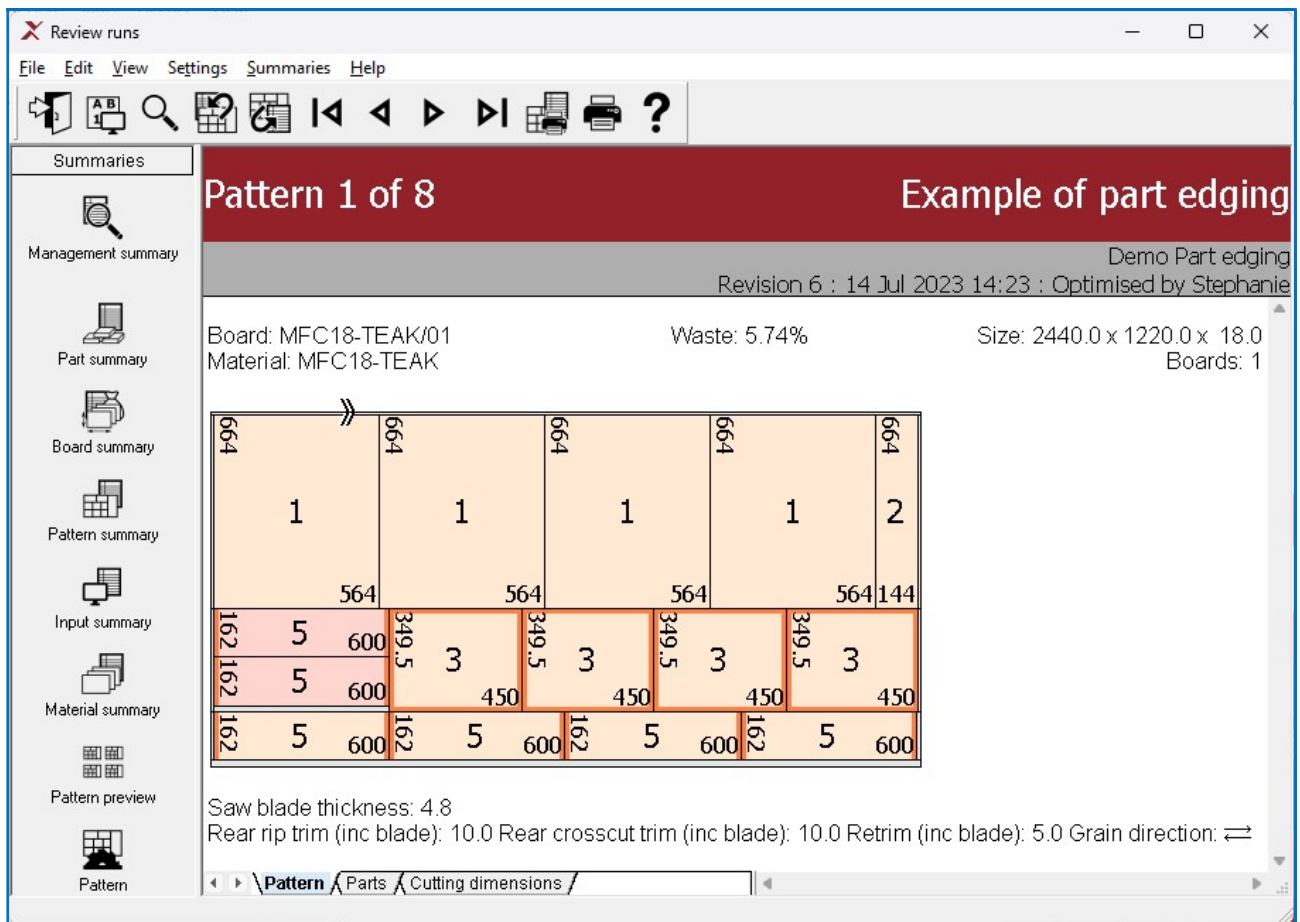


There are options to alter the pattern display and how patterns are shown (e.g. monochrome or colour).

The Reports can be set to show waste percent or yield and whether large values are rounded or not.

The Review runs parameters help describes each setting in detail.

The following example shows the pattern diagram using colour codes rather than monochrome.



6. File Management

The File management options are for organising and maintaining the files created by Magi-Cut V12 Express. At the main screen:-

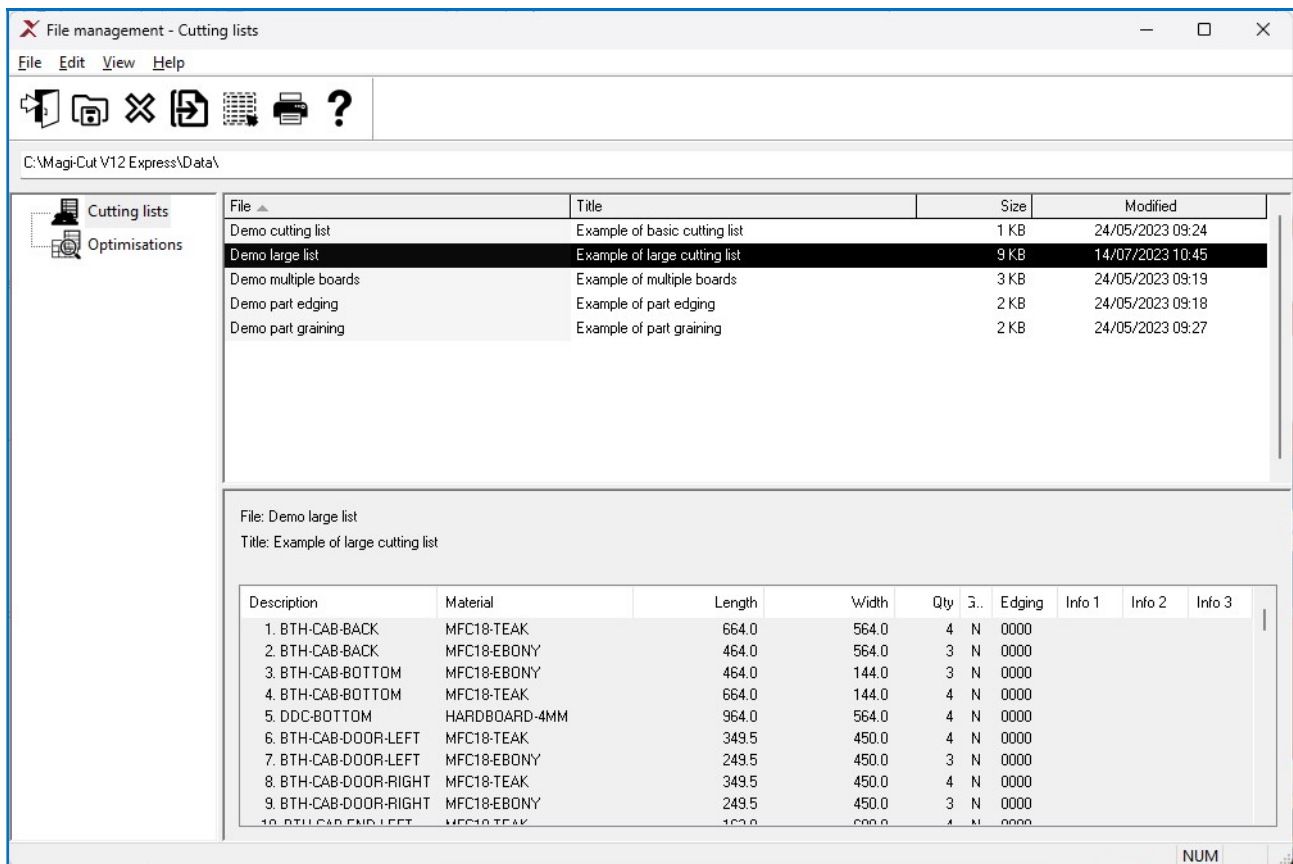
- Select: **File - File Management**

or



Select the Toolbar option

The file management screen is displayed:-



At the left the tree shows the different types of file used by the software.

Cutting lists
Optimisations

- Click on a category to see the files

The pane at the foot of the screen shows the contents of the currently selected file.

Copy files

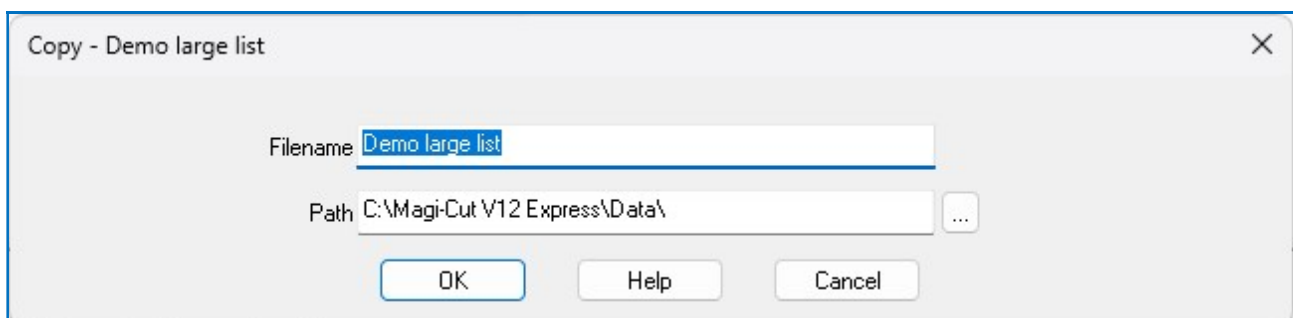
- Select type of file in the left pane
- Select one or more files
- Select: **File - Copy**

or



Select the Toolbar option

The program prompts to select a file name and/or directory to copy the files to.



Use the list box to select a path

- Select **OK** to finish

Delete Files

To permanently remove files.

Select type of file in the left pane

- Select files
- Select: **File - Delete**

or



Select the Toolbar option

The program prompts to confirm delete.

Notes

For optimisations (runs) the program deletes all the files associated with the run. A run consists of several different files as well as the main run file.

Example1.ctt - cutting list
 Example1.brd - board list
 Example1.ptn - patterns
 Example1.btc - internal file
 Example1.cut - cutting instructions

Print (File management)

To print the current list of files, at the File Management screen:-

- Select: **File - Print (Ctrl P)**

or



Select the Toolbar symbol

The program prints the current list.

To set up the printer: Select: **File - Print setup**

The program displays a standard Windows dialog to change the printer settings.

To print with a preview: Select: **File - Print Preview**

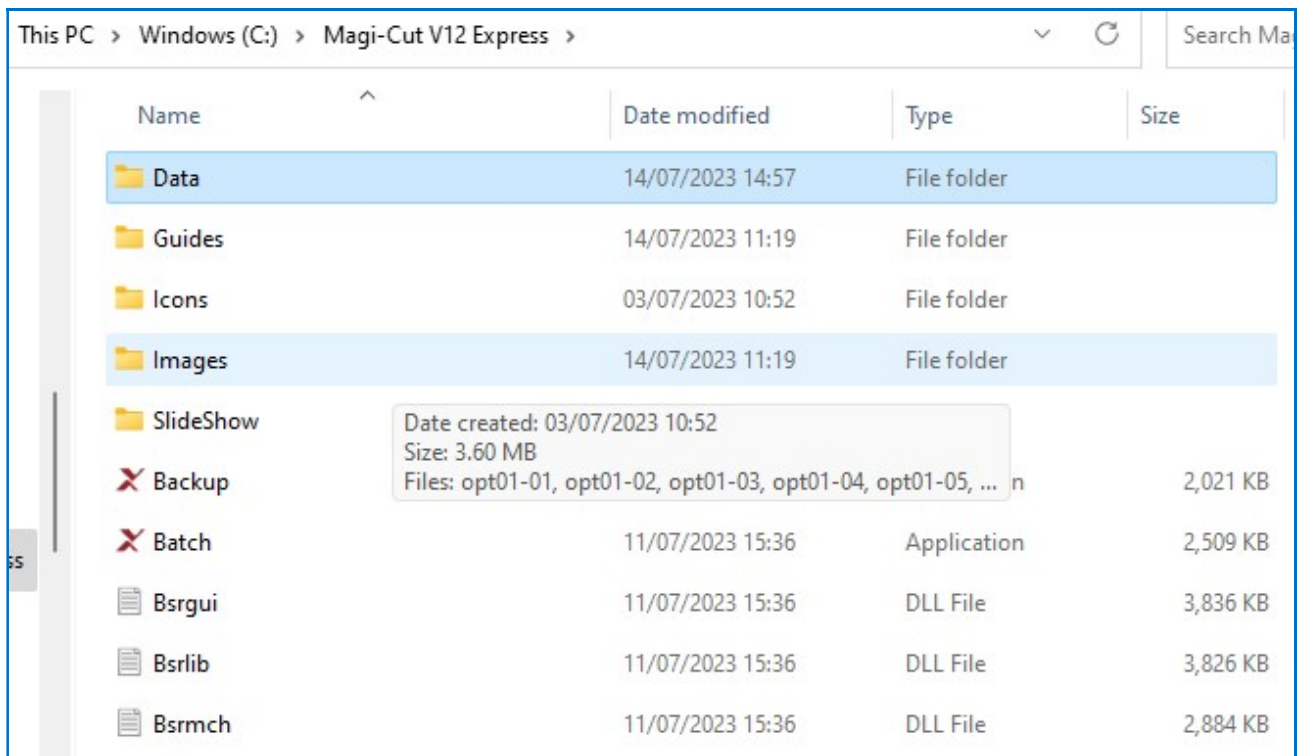
7. Backup and Restore

Once the program is in regular use - make sure the System Administrator includes the program directory in the regular system backups. This is the directory that was set up during the install process, for example:-

c:\Magi-Cut V12 Express

The program and all the data are typically stored in this directory/folder with data and other information in sub-directories, for example:-

c:\Magi-Cut V12 Express\Data



Backup

The program includes a 'Back up' option. This takes a copy of the current data and stores it in a single compressed file.

'Back up' can be used to take a snapshot of the data for archiving or testing and as a regular back up - *but it should not replace a regular back up set by the System Administrator.*

At the main screen:-

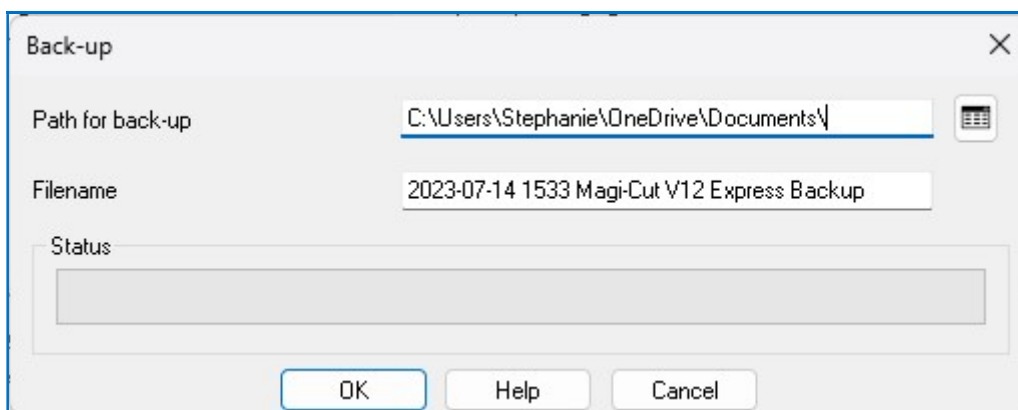
- Select: **File - Back up**

or



Select the Toolbar option

The Backup dialog is displayed.



The 'Path for back up' defaults to 'My documents'. Use the list box to select an alternative path.

The 'File name' box contains a default name based on the date and time. Click on the field to edit the name or enter a different name.

- Select **OK** to confirm

The data is backed up to a single file (e.g. 2023-06-23 Magi-Cut V12 Express Backup.bkp). This is a 'zipped' file containing all the files in a compressed form.

When back up is complete the program prompts with a message showing number of files and overall size.

- Select **OK** to finish

Note - The 'Back up' option is also available at the File management screen.

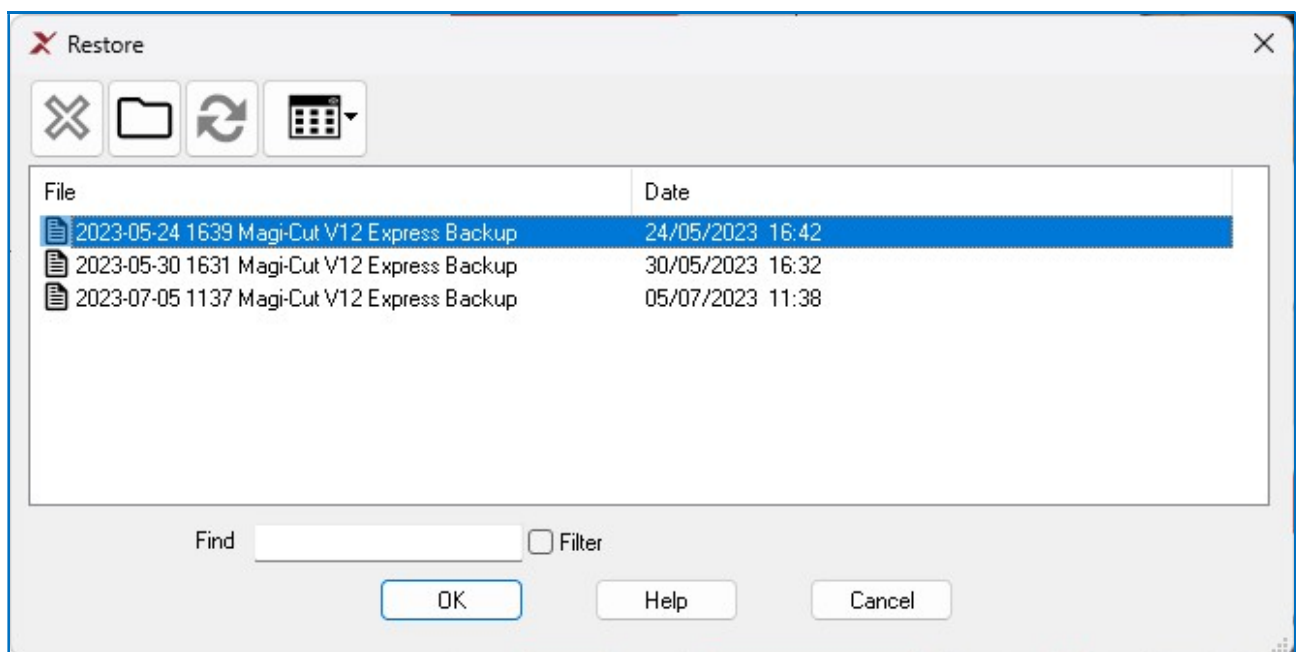
Restore

To restore backed up data. At the main screen:-

- Select: **File - Restore**

(If there are no back up files in the current back up directory the program warns with the message '*No entries found*' - select OK to continue).

The program prompts with a list of Back up files.



- Use the Browse button to choose from a different back up directory.

- Select **OK** to continue

Any existing data is replaced.

The program automatically takes a back up of the existing data before replacing it.


- Select **Yes** to continue

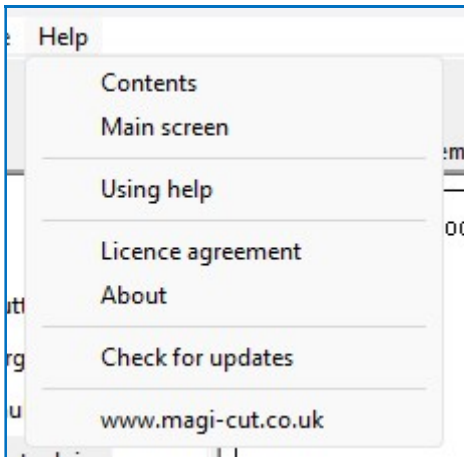
When the restore is complete a message '*Restore finished*' is shown on the screen.

8. Access to Help

There are a range of Help options when using the program.

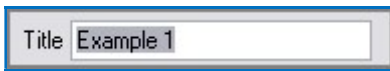
At each screen or dialog there is typically a help button and usually Help choices on the menu.

 - click the help symbol



- choose an option from the Help menu

Where the cursor is located at a field or check box press F1 to bring up help about that item.

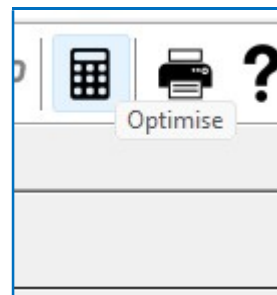


- press [F1] for help

On most dialogs a help button is provided.

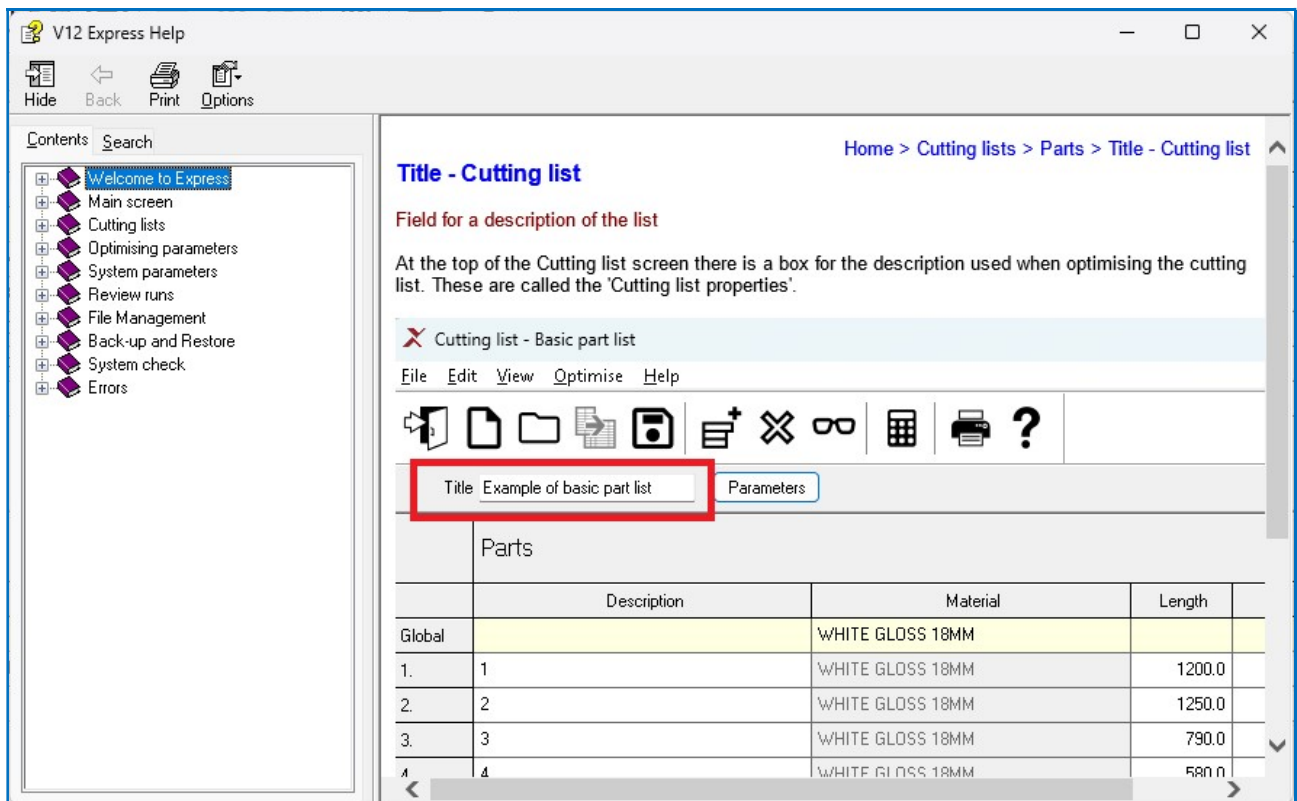


- click on button for more details

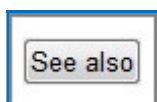


- Place the cursor over an object to view a tooltip

Help is shown in a Window that sits on top of the program window. The Left pane shows the Contents and the Right pane the current topic.



The Toolbar and Help menu at the top of the Help screen gives access to other options, for example, Print.

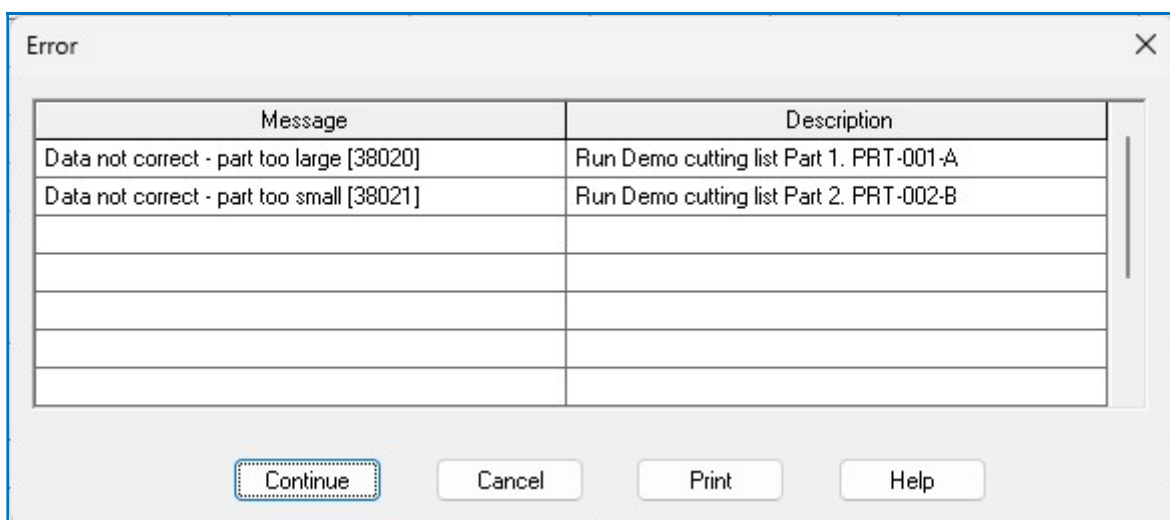


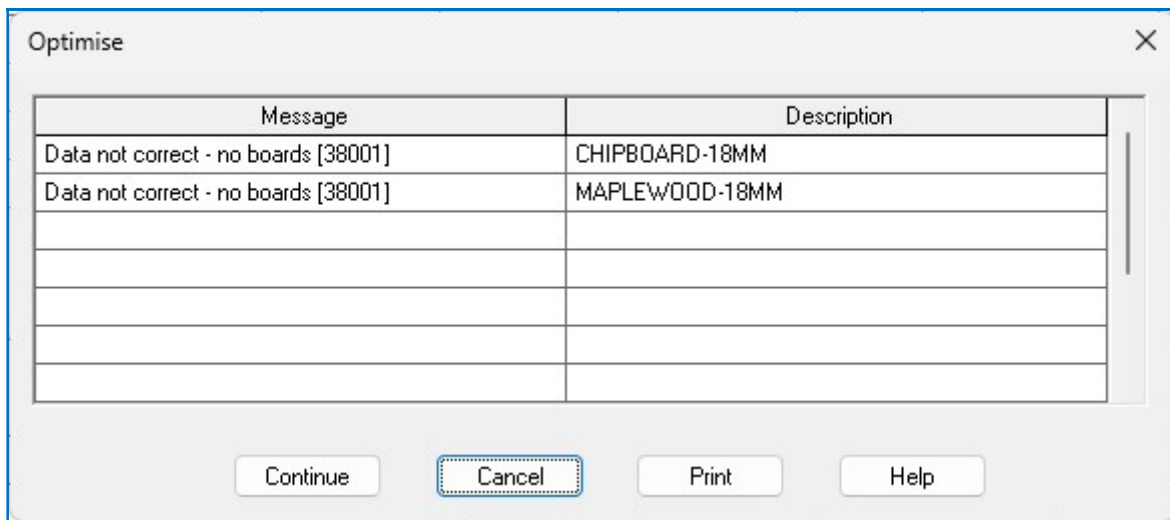
On most topics there is a 'See also' button - this shows other links relevant to the topic.

- Print any help topic by using the **Print** option from the menu at the top of the screen.


Errors

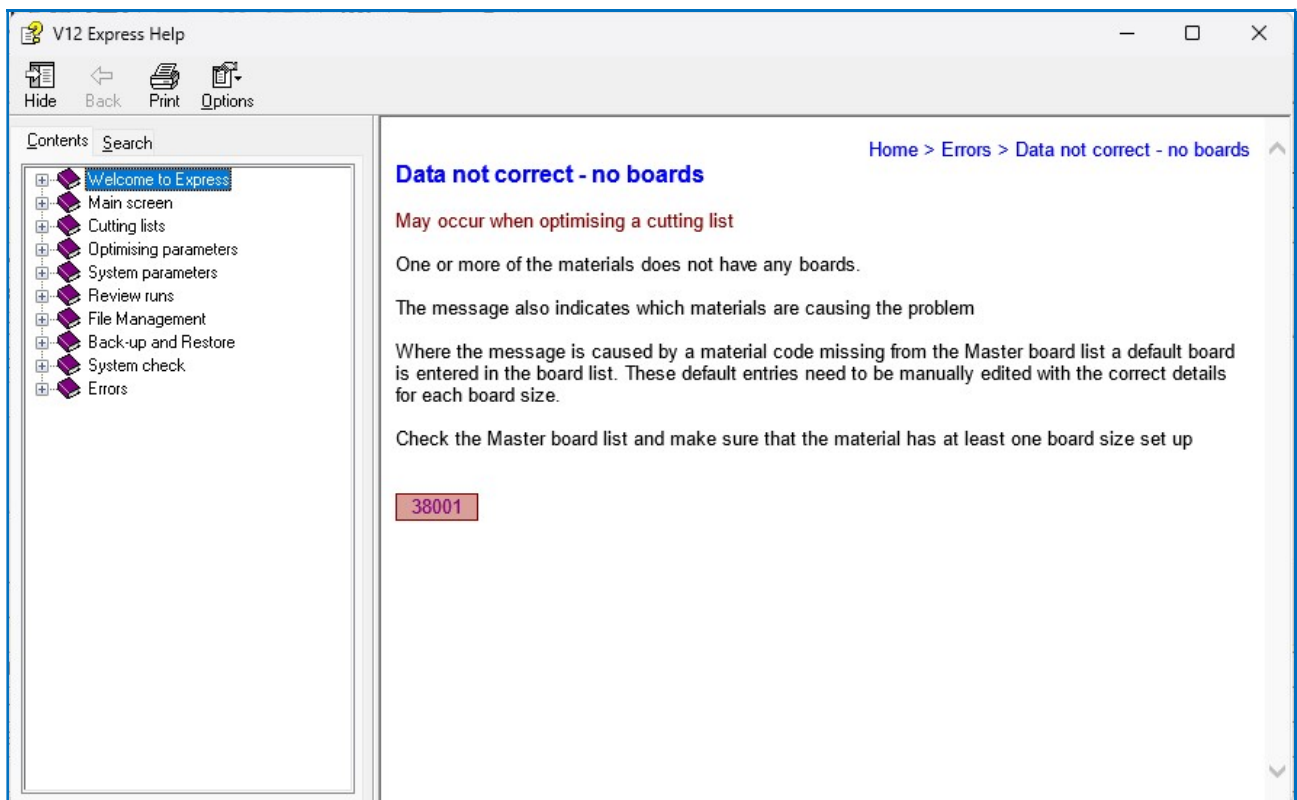
If a problem occurs this is typically reported as an Error message on-screen. For example:-





When working with cutting lists, runs etc. problems are often caused by missing or wrong data. In these cases the start of the message indicates the type of problem and the rest of the message describes the missing data.

 - select the Help button for details of the error



All the error messages are included in the Help file and can also be accessed from the Help menu or by searching the help. Each error also has a fixed number to help identify it.

- To search for a phrase like: *Data not correct - No boards* enclose the phrase in quotes: "Data not correct - No boards"

- Some errors messages can have several different causes - check the topic carefully to identify the correct cause.

After the error message

Where the error is advisory the program may continue to complete the operation - in this case check the results carefully.

In most cases the error prevents the operation and the program moves back to the previous screen.

System Check

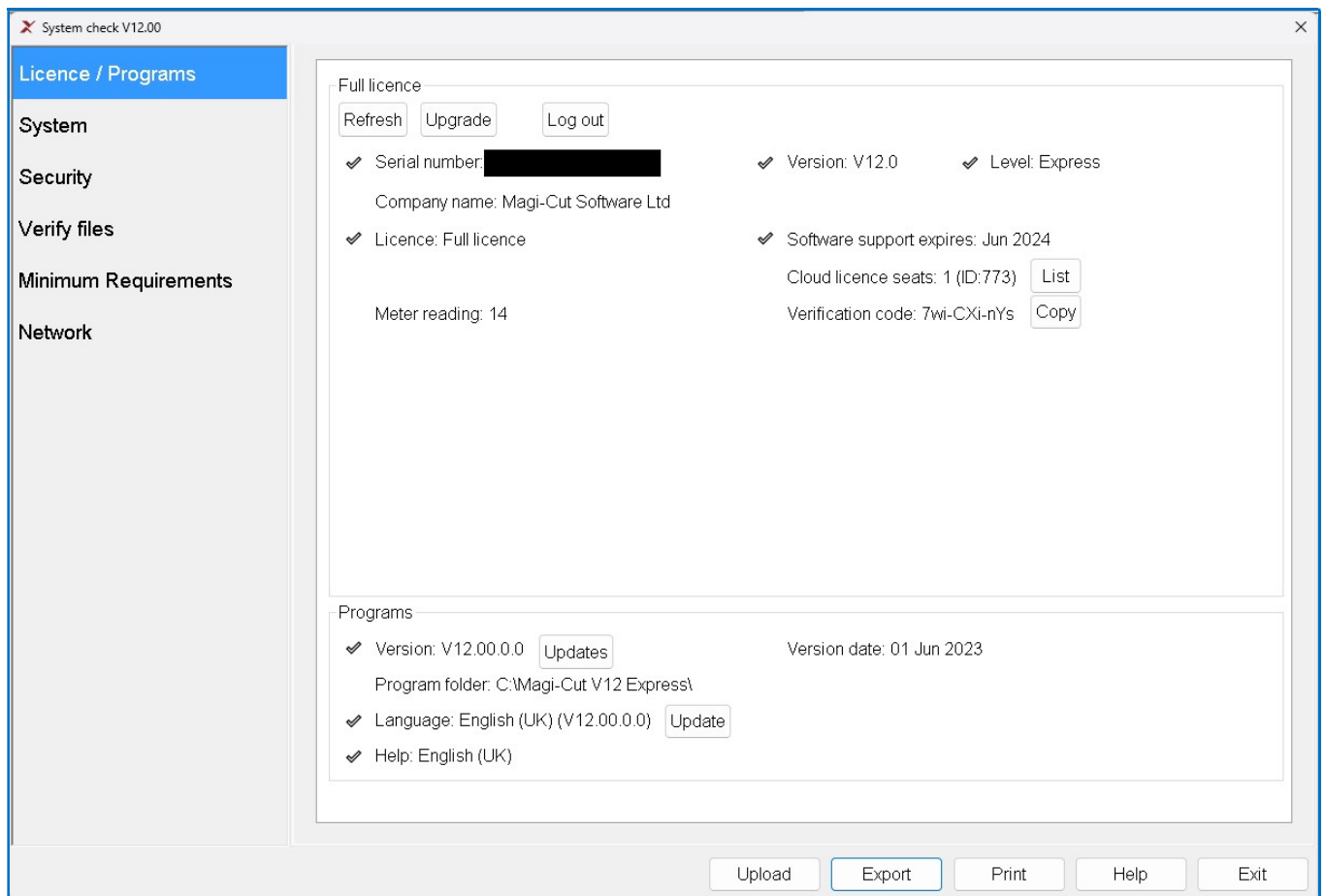
This option performs basic checks on the hardware, operating system and software installation.

It is useful for investigation of problems with the software not running and problems with the Licence.

At the main screen:-

- Select: **Tools - System Check**

The System Check Report is displayed



Some of the individual checks are available on the Check menu.

The Initial screen shows the following information.

Version number and directory checked
Program and language status
Licence details
System details
Memory details
Disk drives

If an item shows Ok the item is Ok for running the program

If there is an X check the item as it may be a problem

To print a system check report:-

- Select: **File - Print**
- or



- Select the print button

Notes

The System check option can also be run as a stand-alone Program. It is in the program directory (where the program was installed) and is named 'Check.exe' - this can be useful where the program is not running. The 'Check' program does not require a licence.